



Authorized Distributor:
Pacific Marine & Industrial
www.pacificmarine.net
info@pacificmarine.net

TWG
a **DOVER** company



TH Series HOISTS OVERVIEW

Tulsa Winch is a trusted brand and a leading manufacturer for over ninety years in worm and planetary gear hoists and swing drives for, digger derricks, cranes, and aerial work platforms for the infrastructure markets. Tulsa Winch customers rely on our custom application-specific designs that are both reliable, compact, efficient, lightweight, and cost-competitive.

BENEFITS

- Provides optimum line speed, line pull, and performance for your application
- Provides long life, reliability and easy installed serviceability
- Allows motor mounting on both sides along with over spool and under spool options
- Positive dynamic breaking and precise load control
- Flexibility to meet application needs
- Direct integration into vehicle reducing weight and saving costs.

FEATURES

- Continuous rating 5,000 in-lbs. to 15,000 in-lbs. bare drum
- Available with several motor options
- Integral spring-applied, hydraulically-released brake for static load holding.
- Brake has its own oil cavity
- A symmetrical design
- The cable drum is mounted on large-capacity ball bearings
- Designed is optimized utilizing standard tooling and methods
- Custom baseless designs are available
- Multiple drum sizes and drum groove options available
- Optional integral speed direction, last layer, and last wrap sensor

APPLICATIONS

Truck-Mounted Cranes, Rough-Terrain Cranes, Drilling Rigs, Offshore Cranes, and Marine vessels.

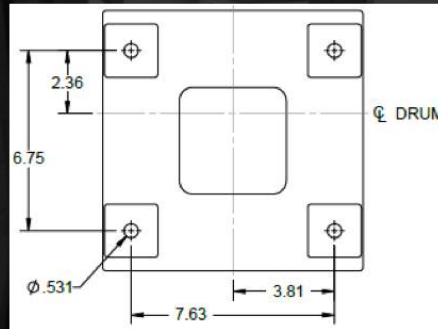
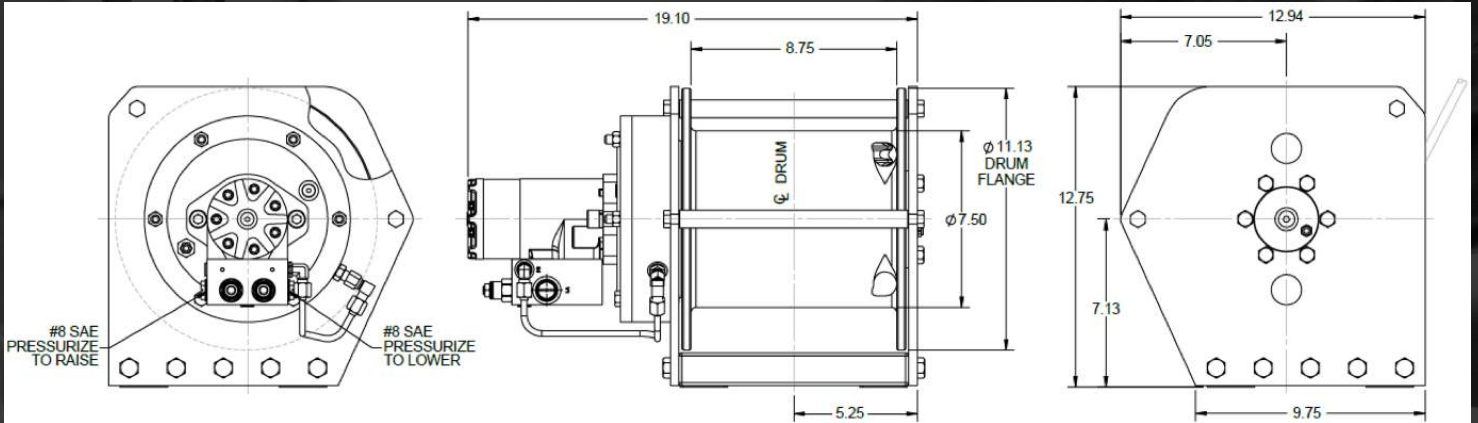
Th-Series Hoist Experts For More Information!



Authorized Distributor:
Pacific Marine & Industrial
www.pacificmarine.net
info@pacificmarine.net



TH500 SPECIFICATIONS



LAYER	LINEPULL (IB)	LINESPEED (FPM)	ROPE CAPACITY (FT)
1	5,000	79	42
2	4,500	88	88
3	4,100	96	138
4	3,760	105	194**

Performance is based on 15 gpm @ 2400 psi with $\phi .44$ " rope

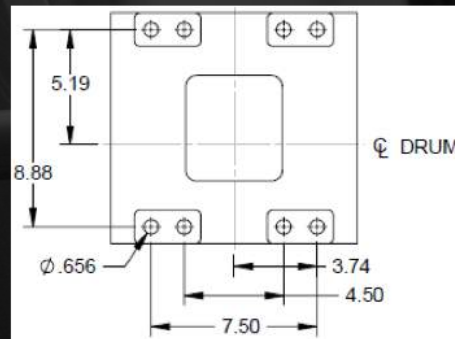
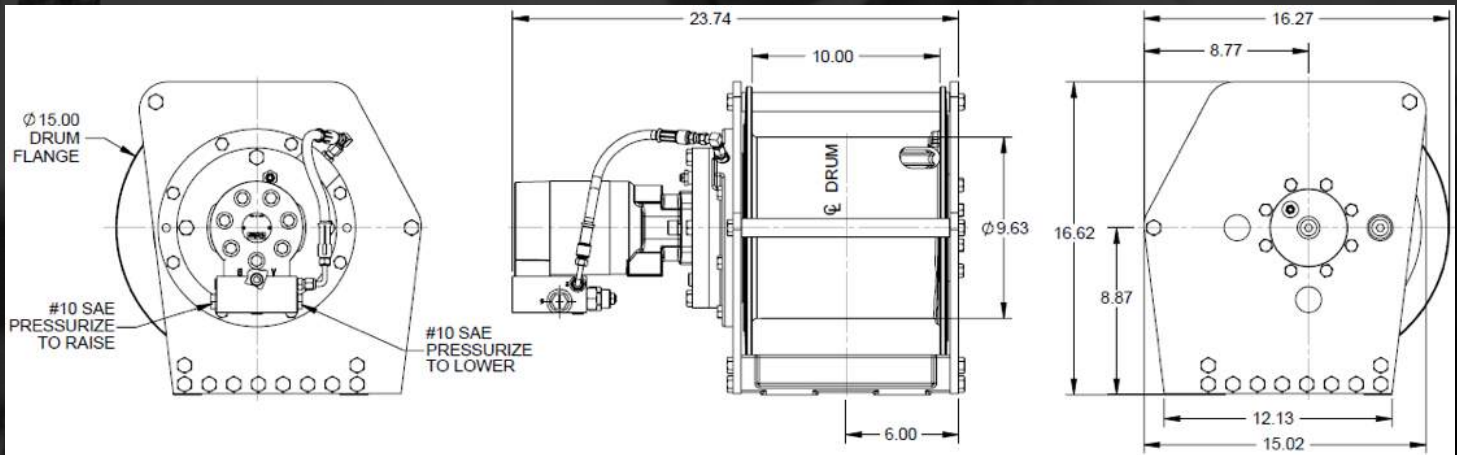
** Last layer is for storage only, does not comply with ANSI



Authorized Distributor:
Pacific Marine & Industrial
www.pacificmarine.net
info@pacificmarine.net



TH700 SPECIFICATIONS



LAYER	LINEPULL (IB)	LINESPEED (FPM)	ROPE CAPACITY (FT)
1	7,000	104	53
2	6,370	114	111
3	5,850	125	175
4	5,400	135	243
5	5,020	145	317**

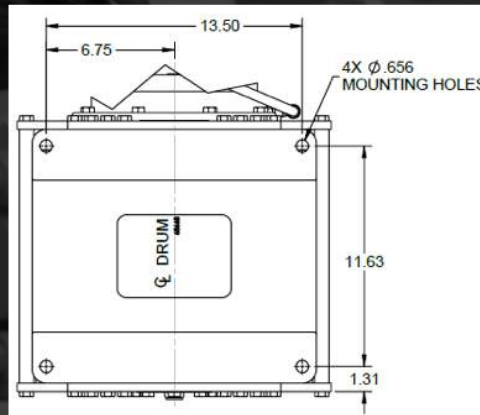
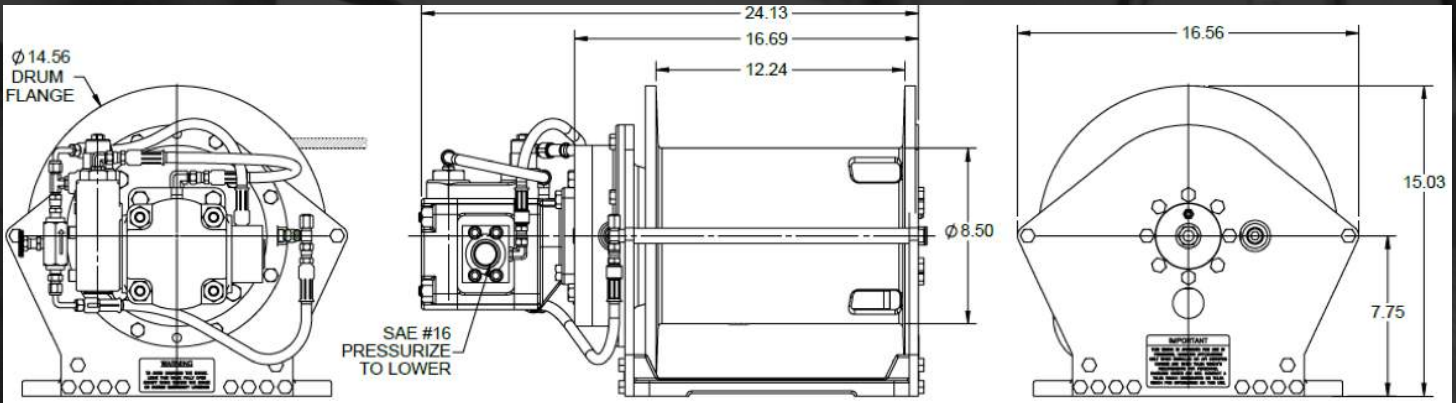
Performance is based on 25 gpm @ 2500 psi with Ø .50" rope.

** Last layer is for storage only, does not comply with ANSI





TH800 SPECIFICATIONS



LAYER	LINEPULL (IB)	LINESPEED (FPM)	ROPE CAPACITY (FT)
1	8,000	219	58
2	7,200	244	122
3	6,550	268	192
4	6,000	293	269
5	5,540	317	352
6	5,140	341	442 **

Performance is based on 60 gpm @ 2400 psi with Ø .50" rope.

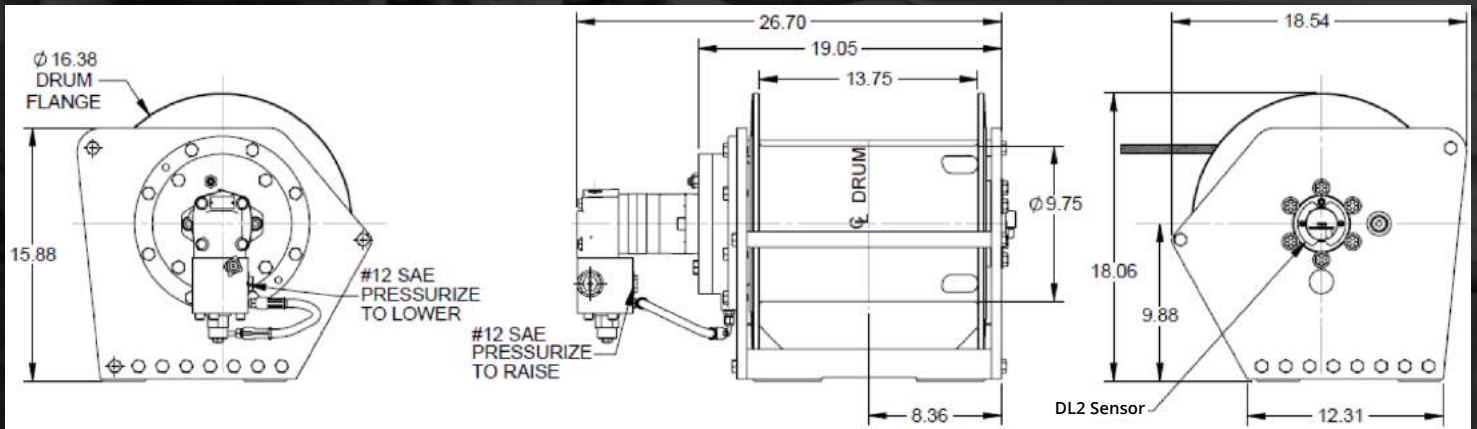
** Last layer is for storage only, does not comply with ANSI



Authorized Distributor:
Pacific Marine & Industrial
www.pacificmarine.net
info@pacificmarine.net



TH1200 SPECIFICATIONS



LAYER	LINEPULL (IB)	LINESPEED (FPM)	ROPE CAPACITY (FT)
1	12,000	71	66
2	10,800	79	139
3	9,850	87	220
4	9,040	94	307
5	8,350	102	402

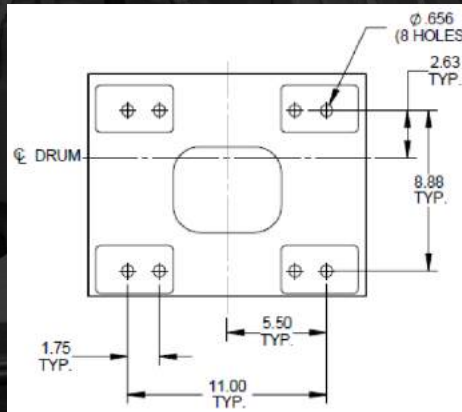
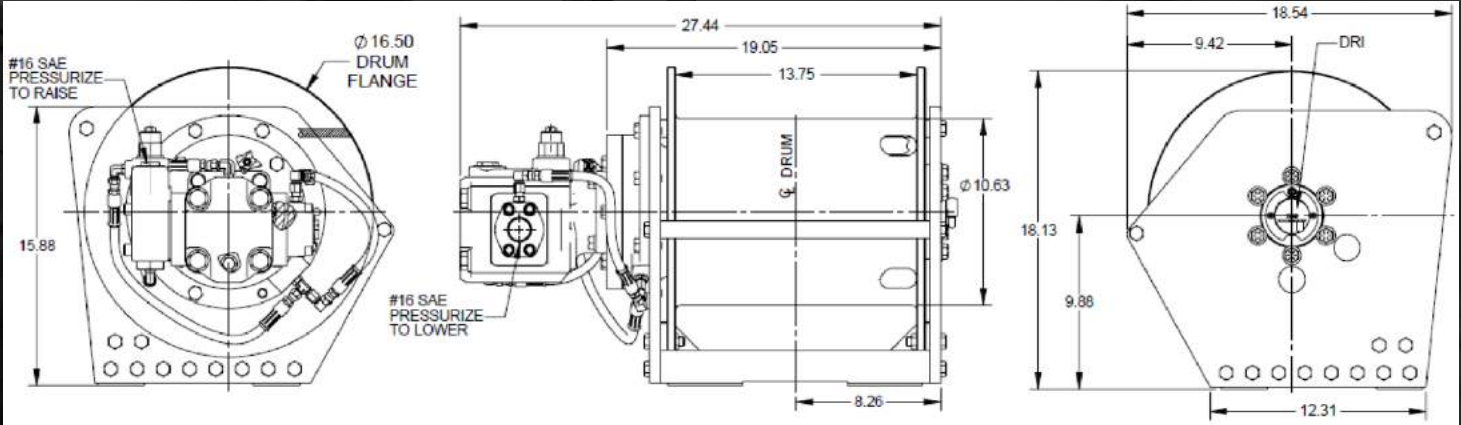
Performance is based on 25 gpm @ 2750 psi with $\varnothing .56$ " rope



Authorized Distributor:
Pacific Marine & Industrial
www.pacificmarine.net
info@pacificmarine.net



TH1500 SPECIFICATIONS



LAYER	LINEPULL (IB)	LINESPEED (FPM)	ROPE CAPACITY (FT)
1	15,000	135	65
2	13,500	150	137
3	12,275	165	216
4	11,250	180	302

Performance is based on 60 gpm @ 2750 psi with $\varnothing .63$ " rope



Authorized Distributor:
Pacific Marine & Industrial
www.pacificmarine.net
info@pacificmarine.net



Since 1929, Tulsa Winch has been manufacturing the highest quality planetary and worm gear winches and swing drives for large oilfield trucks, heavy haul tractor packages, digger derricks, cranes and aerial work platforms.



LANTEC®

Pull+MASTER®



For over 91 years, TWG, an operating company of the Dover Corporation, has been a global leader in manufacturing winches, hoists, slewing ring bearings, swing drives, electronic monitoring systems, and more. TWG serves the Infrastructure, Energy, Recovery, Natural Resource, and Marine markets, providing a range of essential parts and products across seven model lines: DP Winch, Gear Products, Greer, Pullmaster, LANTEC, Tulsa Winch, and RUFNEK.



Authorized Distributor:
Pacific Marine & Industrial
www.pacificmarine.net
info@pacificmarine.net

Contact Us Today

TWG Headquarters, 11135 S James Ave
Jenks, OK 74037 USA

(918) 298-8300 | salesinfo@dovertwg.com



www.dovertwg.com



Contact Us Today

TWG Canada, 19350 22nd Ave
Surrey, BC V3Z 3S6 CANADA

(604) 547-2100 | salesinfo@dovertwg.com