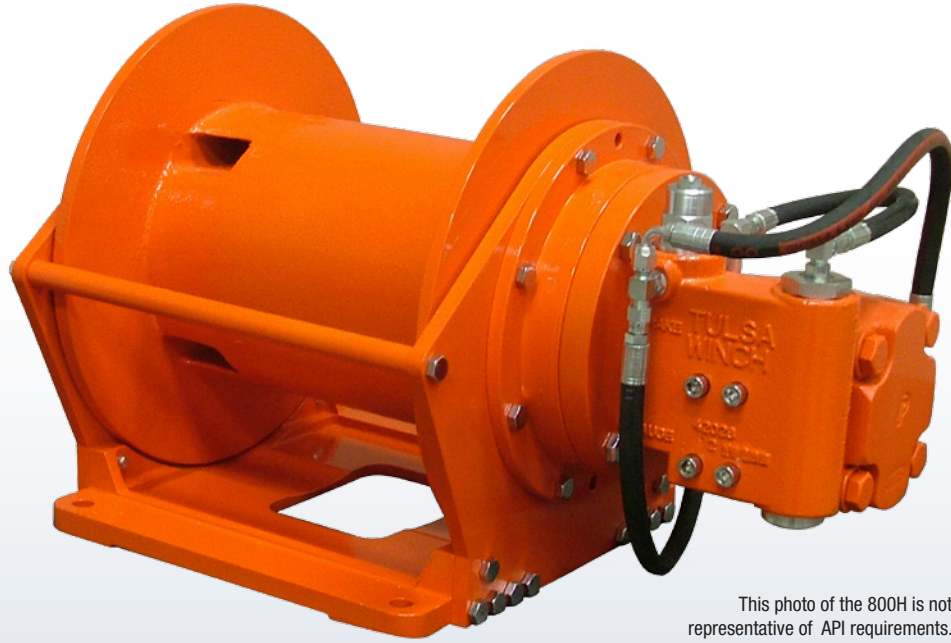


Model 800H API Industrial Hoist

8,000 lb Line Pull



This photo of the 800H is not representative of API requirements.

Advanced Features and Superior Benefits

Multiple motor sizes and gear ratios available

Optimal application flexibility and versatility

Integral, spring-applied, hydraulically released static brake with segregated oil cavity

Long life and easy serviceability

Industry proven motor-mounted counterbalance valve

Superior control, smooth operation and dynamic braking

Two-stage planetary gearing

Compact, efficient and low maintenance



Infrastructure | Energy | Recovery

www.dovertwg.com



Authorized Distributor:
Pacific Marine & Industrial
www.pacificmarine.net
info@pacificmarine.net

TWG is a global leader in standard and engineered winch, gearbox and electronic monitoring systems.

Canada: salesinfo@dovertwg.com

Latin America: salesinfo@dovertwg.com
Europe: salesinfo@dovertwg.com

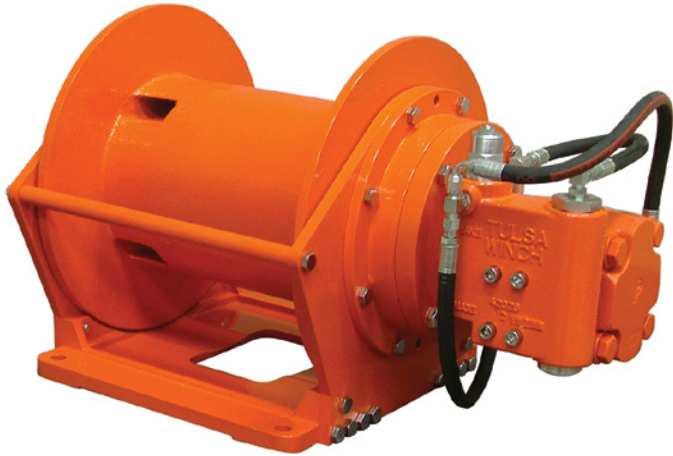
TWG Headquarters
PO Box 1130
Jenks OK 74037-1130 USA
Phone: +1-918-298-8300

dp Winch | Greer Company | LANTEC | Pullmaster | Tulsa Winch

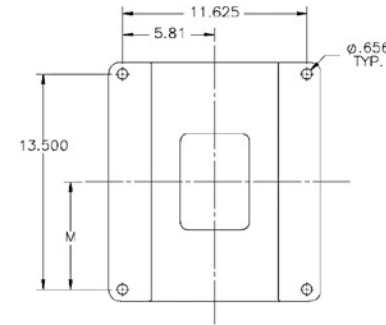
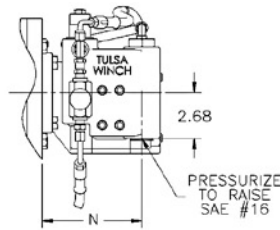
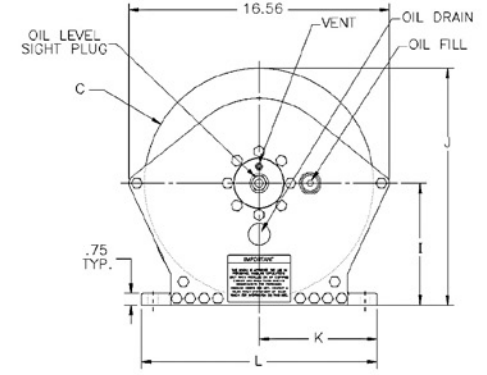
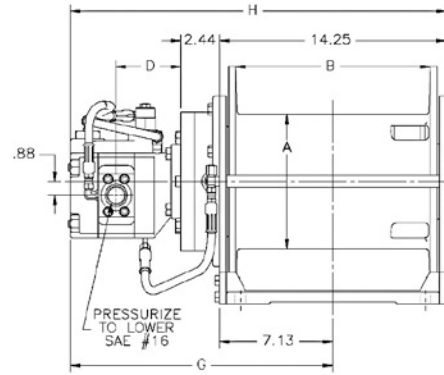
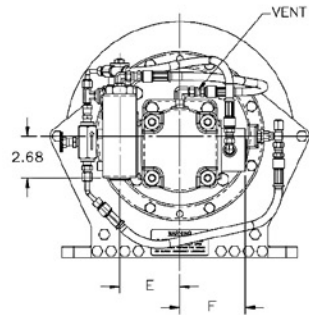


Model 800H API Industrial Hoist

8,000 lb Line Pull



This photo of the 800H is not representative of API requirements.



CAUTION:
The last 5 wraps of cable must be left on the drum to assist the cable clamp in holding the load.

| P/N | Arrangement | CID | Ratio | A | B | C | D | E | F | G | H | I | J | K | L | M | N |
|----------|-------------|------|-------|-----|-------|-------|------|------|------|------|-------|------|-------|-----|----|------|------|
| 82262001 | LO | 2.94 | 59:1 | 8.5 | 12.24 | 14.56 | 4.06 | 3.84 | 4.16 | 16.5 | 23.63 | 7.75 | 15.03 | 7.5 | 15 | 6.75 | 5.86 |
| 82264001 | LO | 3.94 | 34:1 | 8.5 | 12.24 | 14.56 | 4.31 | 3.84 | 4.16 | 17 | 24.13 | 7.75 | 15.03 | 7.5 | 15 | 6.75 | 6.11 |
| 82267001 | LO | 3.94 | 23:1 | 8.5 | 12.25 | 14.56 | 4.31 | 3.84 | 4.16 | 17 | 24.13 | 7.75 | 15.03 | 7.5 | 15 | 3.75 | 6.11 |

| P/N 82262001 | | | |
|--------------|-----------------------|-------------------|---------------------|
| Gear Ratio | Winch Performance at | | Total Drum Capacity |
| | 50 GPM | 1,900 psi | |
| 59:1 | Stall Line Pull (lbs) | Winch Speed (fpm) | n .50 Cable |
| Layer | | | |
| 1 | 8,000 | 141 | 57 |
| 2 | 7,231 | 157 | 119 |
| 3 | 6,574 | 172 | 189 |
| 4 | 6,026 | 188 | 264 |
| 5 | 5,562 | 204 | 346 |
| 6* | 5,165 | 219 | 434 |

| P/N 82264001 | | | |
|--------------|-----------------------|-------------------|---------------------|
| Gear Ratio | Winch Performance at | | Total Drum Capacity |
| | 65 GPM | 2,425 psi | |
| 34:1 | Stall Line Pull (lbs) | Winch Speed (fpm) | n .50 Cable |
| Layer | | | |
| 1 | 8,000 | 244 | 57 |
| 2 | 7,230 | 271 | 119 |
| 3 | 6,572 | 298 | 189 |
| 4 | 6,025 | 326 | 264 |
| 5 | 5,561 | 353 | 346 |
| 6* | 5,164 | 380 | 434 |

| P/N 82267001 | | | |
|--------------|-----------------------|-------------------|---------------------|
| Gear Ratio | Winch Performance at | | Total Drum Capacity |
| | 65 GPM | 3,000 psi | |
| 23:1 | Stall Line Pull (lbs) | Winch Speed (fpm) | n .50 Cable |
| Layer | | | |
| 1 | 6,685 | 361 | 57 |
| 2 | 6,020 | 401 | 119 |
| 3 | 5,470 | 441 | 189 |
| 4 | 5,010 | 481 | 264 |
| 5 | 4,630 | 521 | 346 |
| 6* | 4,300 | 561 | 434 |

*This layer does not meet ANSI 30.5 for .50 inch flange freeboard.

Contact a TWG sales representative about other available configurations.

As a leader in product innovation, TWG is committed to the ongoing improvement of its equipment. TWG reserves the right to make changes to our products without notice.

Tulsa Winch is part of TWG, a global leader in standard and engineered winch, gearbox and electronic monitoring systems.

PO Box 1130
Jenks OK 74037-1130 USA
Phone: +1-918-298-8300
www.dovertwg.com



Authorized Distributor:
Pacific Marine & Industrial
www.pacificmarine.net
info@pacificmarine.net