



Authorized Distributor:
Pacific Marine & Industrial
www.pacificmarine.net
info@pacificmarine.net

TWG
a **DOVER** company



Swing Drive OVERVIEW

Contact Us Today! P: 918 298 8300 | E: salesinfo@dovertwg.com | W: www.dovertwg.com



Authorized Distributor:
Pacific Marine & Industrial
www.pacificmarine.net
info@pacificmarine.net

With over 75 years of experience and knowledge, TWG's planetary swing drives have the durability that you need and can depend on. Our planetary gear drives are commonly used in the Infrastructure, Recovery, Energy & Marine markets custom built for each application.

BENEFITS

- Ratings to meet customer requirements.
- Gearing optimized using latest state of the art gear analysis software and proven practices.
- Minimize total assembly backlash.
- High-efficiency planetary gearing.
- Custom output shafts/pinions.

FEATURES

- Continuous ratings from 20,000 in-lbs. to 125,000 in-lbs.
- Multiple ratios and motor options available.
- Heavy Duty tapered roller bearing on output shaft.
- Spring-applied, hydraulically released static brakes.
- Eccentric rules optional.
- Hydraulically applied dynamic glide swing brake to meet customer requirements.

APPLICATIONS

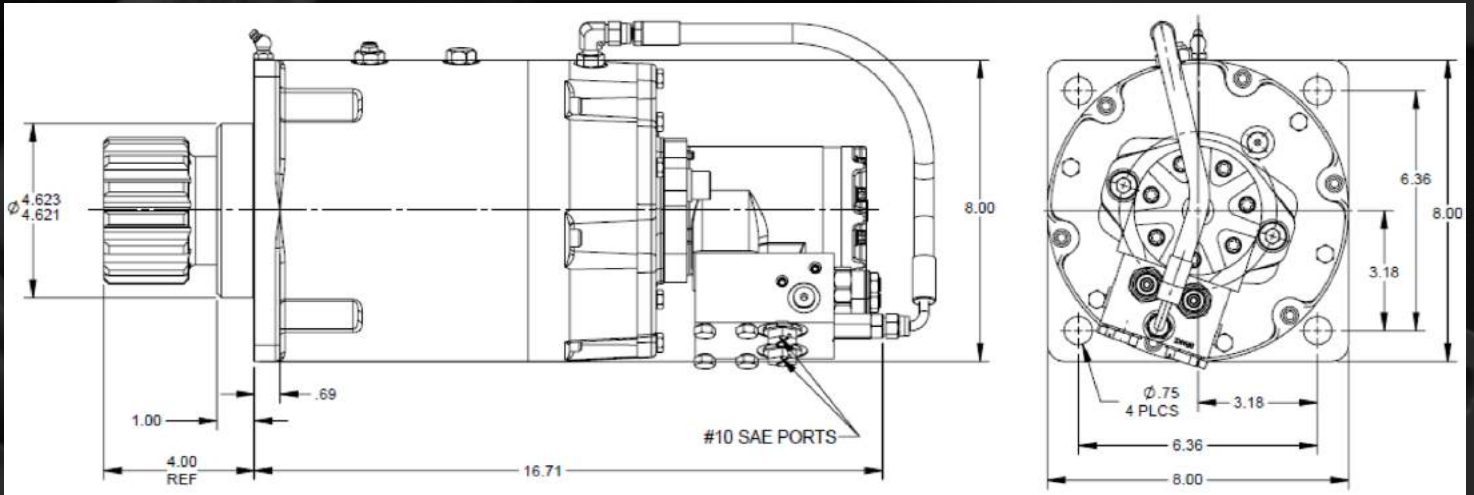
Truck-Mounted Cranes, Rough - Terrain Cranes, Drilling Rigs, Offshore Cranes, and Marine vessels.

Contact our Planetary Swing Drive Experts For More Information!





2025 SPECIFICATIONS



Multiple configurations are available upon request.
 Please contact our team regarding your specific application requirements.

PERFORMANCE DATA

GEAR DATA

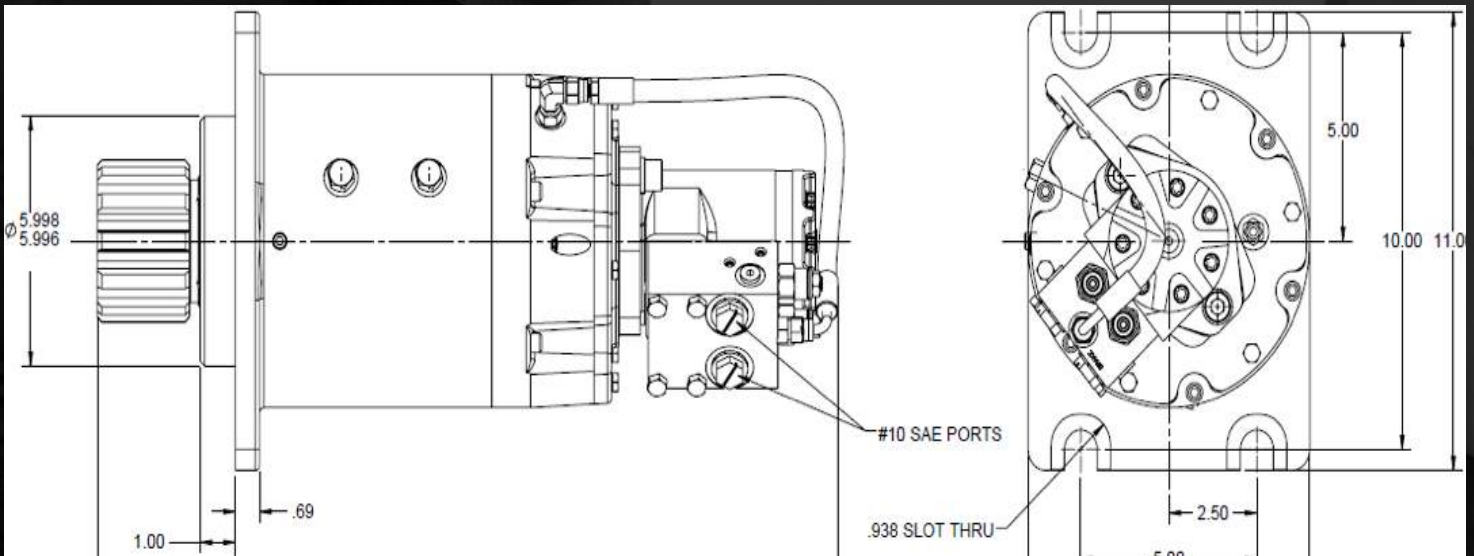
Ratio	25.53:1	Number of Teeth	14
Output Torque - (in lb)	20,000	Diametrical Pitch	4/5
Output RPM	28.0	Pitch Diameter	3.500
Hydraulic Pressure - (psi)	1800	Pressure Angle	20°
Flow Maximum - (gpm)	15		



Authorized Distributor:
Pacific Marine & Industrial
 www.pacificmarine.net
 info@pacificmarine.net



4025 SPECIFICATIONS



Multiple configurations are available upon request.
 Please contact our team regarding your specific application requirements.

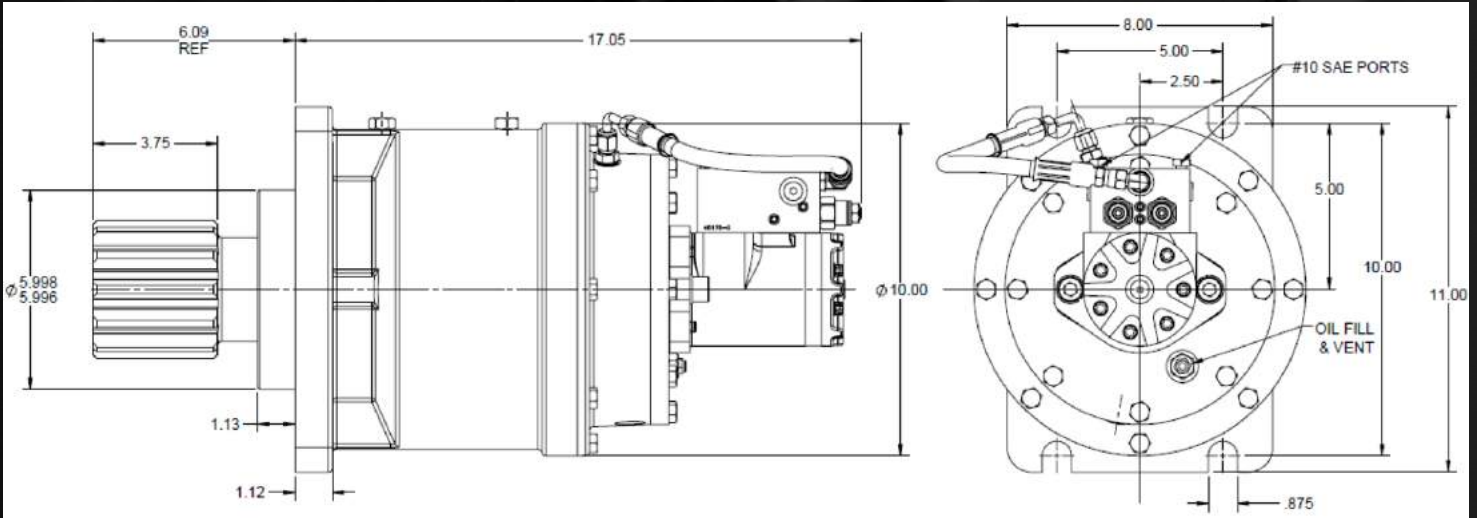
PERFORMANCE DATA

GEAR DATA

Ratio	25.53:1	Number of Teeth	13
Output Torque - (in lb)	40,000	Diametrial Pitch	4 Stub
Outout RPM	13.4	Pitch Diameter	3.250
Hydraulic Pressure - (psi)	1600	Pressure Angle	20°
Flow Maximum - (gpm)	15		



4536 SPECIFICATIONS



Multiple configurations are available upon request.
 Please contact our team regarding your specific application requirements.

PERFORMANCE DATA

GEAR DATA

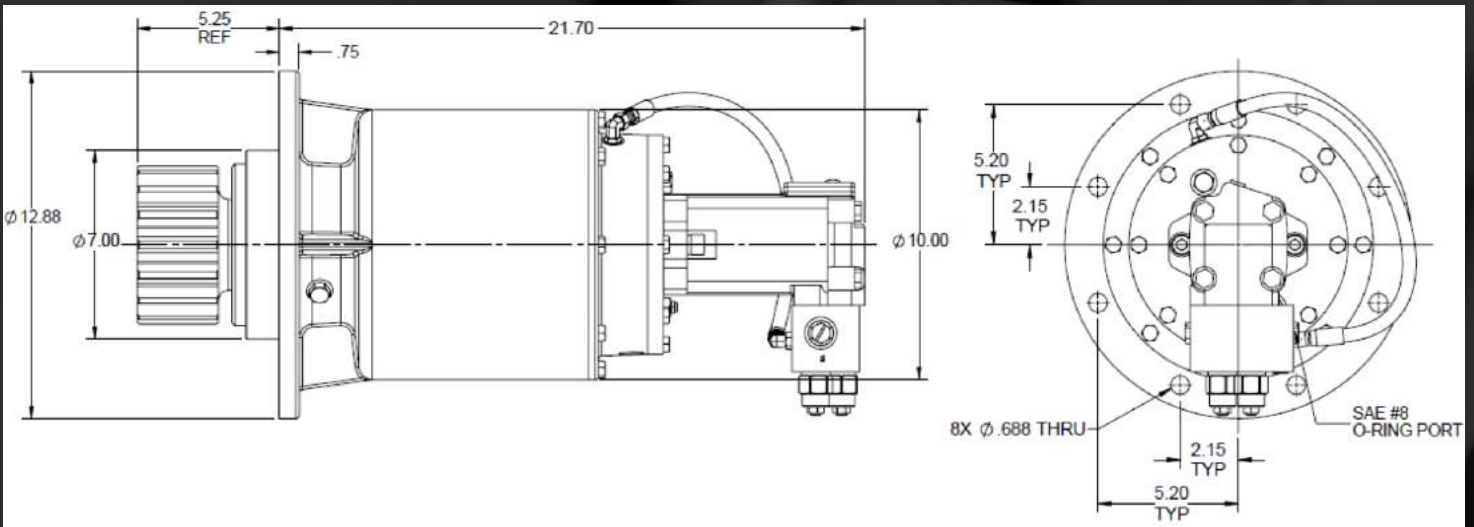
Ratio	36:1	Number of Teeth	12
Output Torque - (in lb)	45,000	Diametrial Pitch	3.5 Stub
Outout RPM	15.6	Pitch Diameter	3.429
Hydraulic Pressure - (psi)	2000	Pressure Angle	20°
Flow Maximum - (gpm)	15		



Authorized Distributor:
Pacific Marine & Industrial
www.pacificmarine.net
info@pacificmarine.net



6036 SPECIFICATIONS



Multiple configurations are available upon request.
Please contact our team regarding your specific application requirements.

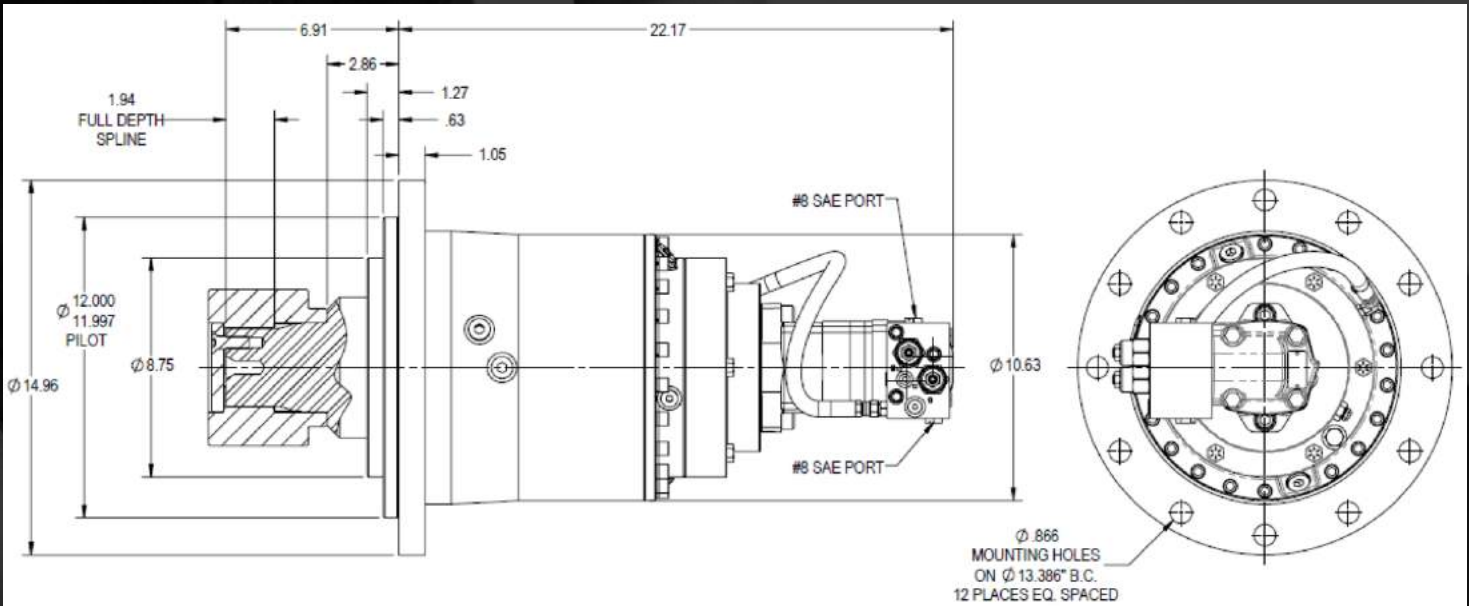
PERFORMANCE DATA

GEAR DATA

Ratio	36:1	Number of Teeth	16
Output Torque - (in lb)	60,000	Diametrial Pitch	3 Stub
Outout RPM	24.0	Pitch Diameter	5.333
Hydraulic Pressure - (psi)	2500	Pressure Angle	20°
Flow Maximum - (gpm)	25		



180PR SPECIFICATIONS



Multiple configurations are available upon request.
 Please contact our team regarding your specific application requirements.

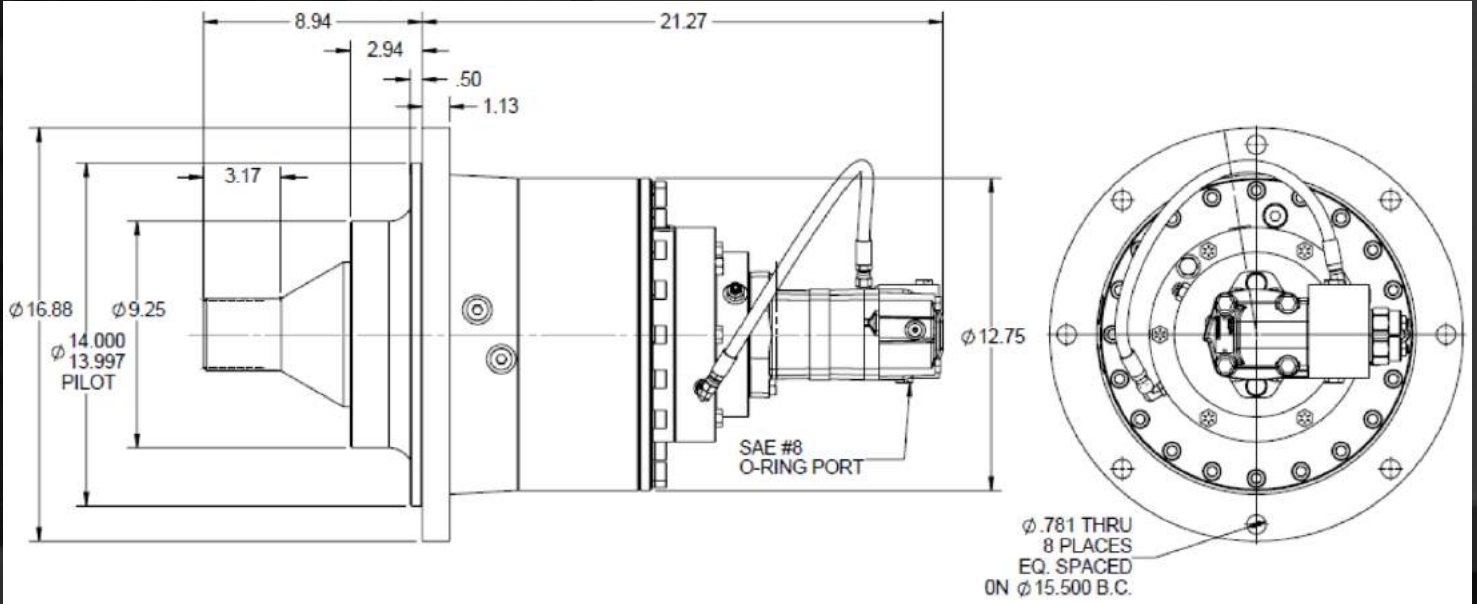
PERFORMANCE DATA		SPLINE DATA		FLAT ROOT SIDE FIT	
Ratio	41:1	Number of Teeth	20		
Output Torque - (in lb)	90,000	Diameterial Pitch	6/12		
Outout RPM	16.6	Pitch Diameter	3.333		
Hydraulic Pressure - (psi)	2500	Pressure Angle	30°		
Flow Maximum - (gpm)	25				



Authorized Distributor:
Pacific Marine & Industrial
 www.pacificmarine.net
 info@pacificmarine.net



250PR SPECIFICATIONS



Multiple configurations are available upon request.
 Please contact our team regarding your specific application requirements.

PERFORMANCE DATA

SPLINE DATA

FLAT ROOT SIDE FIT

Ratio	38:1	Number of Teeth	23
Output Torque - (in lb)	1,20,000	Diametrial Pitch	8/16
Outout RPM	11.9	Pitch Diameter	2.875
Hydraulic Pressure - (psi)	2500	Pressure Angle	30°
Flow Maximum - (gpm)	25		

For over 91 years, TWG, an operating company of the Dover Corporation, has been a global leader in manufacturing winches, hoists, slewing ring bearings, swing drives, electronic monitoring systems, and more. TWG serves the Infrastructure, Energy, Recovery, Natural Resource, and Marine markets, providing a range of essential parts and products across seven model lines: DP Winch, Gear Products, Greer, Pullmaster, LANTEC, Tulsa Winch, and RUFNEK.

Contact Us Today

TWG Headquarters, 11135 S James Ave
 Jenks, OK 74037 USA

(918) 298-8300 | salesinfo@dovertwg.com

TWG
 a DOVER company

www.dovertwg.com



Contact Us Today

TWG Canada, 19350 22nd Ave
 Surrey, BC V3Z 3S6 CANADA

(604) 547-2100 | salesinfo@dovertwg.com