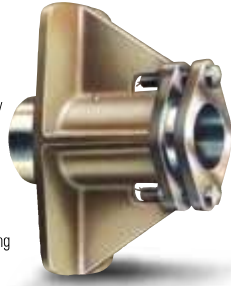


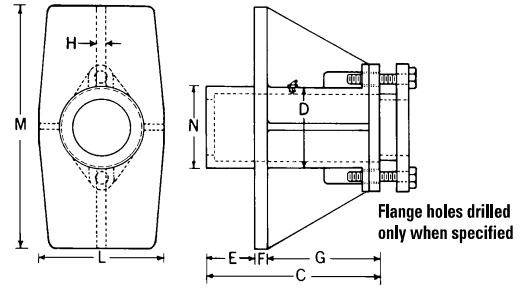
"Strong Boy" Stuffing Boxes & Stern Castings

Model 102

Stuffing Box



- Model 102:** Supplied with packing only
- Model 102L:** Supplied with packing, lantern-ring and grease service for packing lubrication
- Model 102LB:** Supplied with packing, lantern-ring and grease service, with 1/3-length standard rubber sleeve bearing



SPECIFY WHEN ORDERING:

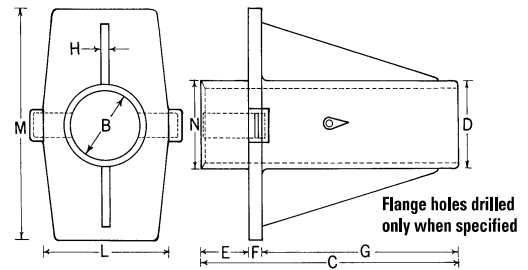
Model Number: Alloy: Bronze (standard) or Aluminum **Shaft Diameter:** In Inches or Millimeters

O.D. Shaft or Sleeve Journal	CODE	C	D	E	F	G	H	L	M	N	Lantern Ring I.D. & Length	Packing Size	No. of Rings
A												Packing	
4	102-400	12 -1/2	5 -3/4	3 -3/4	3/4	8	5/8	9	18	5 -7/8	---	1/2	23
4	102-400L	12 -1/2	5 -3/4	3 -3/4	3/4	8	5/8	9	18	5 -7/8	4 -1/8 x 3 -1/2	1/2	16
4	102-400LB	12 -1/2	5 -3/4	3 -3/4	3/4	8	5/8	9	18	5 -7/8	4 -1/8 x 2 -1/2	1/2	8
4 -1/4	102-414	12 -1/2	5 -7/8	3 -5/8	7/8	8	5/8	9	18	6	---	1/2	23
4 -1/4	102-414L	12 -1/2	5 -7/8	3 -5/8	7/8	8	5/8	9	18	6	4 -3/8 x 3 -1/2	1/2	16
4 -1/4	102-414LB	12 -1/2	5 -7/8	3 -5/8	7/8	8	5/8	9	18	6	4 -3/8 x 2 -1/2	1/2	8
4 -1/2	102-412	12 -1/2	6	3 1/2	1	8	5/8	9	18	6 -1/8	---	1/2	23
4 -1/2	102-412L	12 -1/2	6	3 -1/2	1	8	5/8	9	18	6 -1/8	4 -5/8 x 3 -1/2	1/2	16
4 -1/2	102-412LB	12 -1/2	6	3 -1/2	1	8	5/8	9	18	6 -1/8	4 -5/8 x 2 -1/2	1/2	8
4 -3/4	102-434	13 -3/4	6 -1/4	4	1	8 -3/4	3/4	9 -1/4	18	6 -3/8	---	1/2	26
4 -3/4	102-434L	13 -3/4	6 -1/4	4	1	8 -3/4	3/4	9 -1/4	18	6 -3/8	4 -7/8 x 3 -1/2	1/2	18
4 -3/4	102-434LB	13 -3/4	6 -1/4	4	1	8 -3/4	3/4	9 -1/4	18	6 -3/8	4 -7/8 x 2 -1/2	1/2	8
5	102-500	13 -3/4	6 -3/4	4	1	8 -3/4	3/4	9 -3/4	18	6 -7/8	---	1/2	26
5	102-500L	13 -3/4	6 -3/4	4	1	8 -3/4	3/4	9 -3/4	18	6 -7/8	5 -1/8 x 3 -1/2	1/2	18
5	102-500LB	13 -3/4	6 -3/4	4	1	8 -3/4	3/4	9 -3/4	18	6 -7/8	5 -1/8 x 2 -1/2	1/2	8
5 -1/4	102-514	14 -1/2	7	4 -1/2	1	9	3/4	10	18	7 -1/8	---	1/2	26
5 -1/4	102-514L	14 -1/2	7	4 -1/2	1	9	3/4	10	18	7 -1/8	5 -3/8 x 3 -1/2	1/2	18
5 -1/4	102-514LB	14 -1/2	7	4 -1/2	1	9	3/4	10	18	7 -1/8	5 -3/8 x 2 -1/2	1/2	8
5 -1/2	102-512	14 -1/2	7 -3/4	4 -7/16	1 1/16	9	3/4	10 -3/4	18	7 -7/8	---	3/4	18
5 -1/2	102-512L	14 -1/2	7 -3/4	4 -7/16	1 1/16	9	3/4	10 -3/4	18	7 -7/8	5 -5/8 x 3 -1/2	3/4	12
5 -1/2	102-512LB	14 -1/2	7 -3/4	4 -7/16	1 1/16	9	3/4	10 -3/4	18	7 -7/8	5 -5/8 x 2 -1/2	3/4	6
5 -3/4	102-534	15 -1/2	8	4 -7/8	1 1/8	9 -1/2	7/8	11	18	8 -1/8	---	3/4	18
5 -3/4	102-534L	15 -1/2	8	4 -7/8	1 1/8	9 -1/2	7/8	11	18	8 -1/8	5 -7/8 x 3 -1/2	3/4	12
5 -3/4	102-534LB	15 -1/2	8	4 -7/8	1 1/8	9 -1/2	7/8	11	18	8 -1/8	5 -7/8 x 2 -1/2	3/4	6
6	102-600	15 -1/2	8 -1/4	4 -7/8	1 1/8	9 -1/2	7/8	11 -1/4	18	8 -3/8	---	3/4	18
6	102-600L	15 -1/2	8 -1/4	4 -7/8	1 1/8	9 -1/2	7/8	11 -1/4	18	8 -3/8	6 -1/8 x 3 -1/2	3/4	12
6	102-600LB	15 -1/2	8 -1/4	4 -7/8	1 1/8	9 -1/2	7/8	11 -1/4	18	8 -3/8	6 -1/8 x 2 -1/2	3/4	6

Consult factory for sizes larger than 6"

Model 102

Stern Casting



SPECIFY WHEN ORDERING:

Model Number: Alloy: Bronze (standard) or Aluminum **Shaft Diameter:** In Inches or Millimeters

O.D. Shaft or Sleeve Journal	CODE	B	C	D	E	F	G	H	L	M	N
A											
4	100-400	5	16 -1/4	5 -3/4	2 -3/8	15/16	13	5/8	9	16 -1/2	5 -3/4
4 -1/4	100-414	5 -1/2	17 -1/4	6 -1/4	2 -3/4	1	13 -1/2	5/8	9	16 -1/2	6 -1/4
4 -1/2	100-412	5 -1/2	18 -1/4	6 -1/4	3 -1/4	1	14	5/8	9	16 -1/2	6 -1/4
4 -3/4	100-434	6 -1/8	19 -1/2	7 -1/8	3 -13/16	1 -1/16	14 -1/2	3/4	10	17 -1/2	7 -1/8
5	100-500	6 -1/8	20 -1/2	7 -1/8	4 -3/8	1 -1/8	15	3/4	10	17 -1/2	7 -1/8
5 -1/4	100-514	6 -3/4	21 -1/2	8	4 -7/8	1 -1/8	15 -1/2	3/4	11	18 -1/2	8
5 -1/2	100-512	7	22 -1/2	8	5 -5/16	1 -3/16	16	7/8	11	18 -1/2	8
5 -3/4	100-534	7	23 -1/2	8 -1/4	5 -13/16	1 -3/16	16 -1/2	7/8	12	19 -1/2	8 -1/4
6	100-600	7 -1/2	24 -1/4	8 -1/2	5	1 -1/4	18	1 -1/8	11	20	8 -1/2

Consult factory for sizes larger than 6"