



PACIFIC MARINE & INDUSTRIAL

MANUFACTURING ♦ DISTRIBUTION ♦ SERVICE

PNEUMATIC FENDERS

PRODUCT CATALOG



- Made To The Standards Of ISO 17357-2014
- Chain & Tire Net, Sling, Ribbed, and Hydro Pneumatic Types
 - Class Society Approved Upon Request
- High Energy Absorption With Lower Reaction Force
 - 50 or 80 kPa Initial Internal Pressure
- Ship To Ship Or Ship To Shore Applications
 - Black, Grey Or Red Body Color



Quality Pacific Manufacturing, Inc., P.O. Box 70520 Richmond, CA, USA 94807

☎ 510-233-2310 🌐 www.pacificmarine.net ✉ info@pacificmarine.net

Copyright © Quality Pacific Manufacturing, Inc.



CHAIN & TIRE NET TYPE

With Protective Chain and Tire Net
 Sizes for All Applications (See Page 4 and 5)
 50 or 80 kPa Initial Internal Pressure
 Black, Grey or Red Body
 Used Truck or Used Aircraft Tires
 Stainless or HDG Hardware
 With Safety Relief Valve (2500mm Diameter and Above)
 With Robust and Well Designed End Fittings



SLING TYPE

Less Costly and Lighter Than CTN Type
 Sizes for All Applications (See Page 4 and 5)
 50 or 80 kPa Initial Internal Pressure
 Black, Grey or Red Body
 With Safety Relief Valve (2500mm Diameter and Above)
 With Robust and Well Designed End Fittings



RIBBED TYPE

More Durable Than Sling Type
 Less Costly and Lighter Than CTN Type
 Sizes for All Applications (See Page 4 and 5)
 50 or 80 kPa Initial Internal Pressure
 Black, Grey or Red Body
 With Safety Relief Valve (2500mm Diameter and Above)
 With Robust and Well Designed End Fittings



HYDRO PNEUMATIC TYPE

For US Navy and Other Navy Submarine Use
 Vertical Fender Position with Bottom Counterweight
 Fender Freeboard As Needed
 50 or 80 kPa Initial Internal Pressure
 Black, Grey or Red Body
 With Safety Relief Valve (2500mm Diameter and Above)
 Improved Top Plate Design for SRV Testing and Replacement



PACIFIC MARINE & INDUSTRIAL



510-233-2310



www.pacificmarine.net



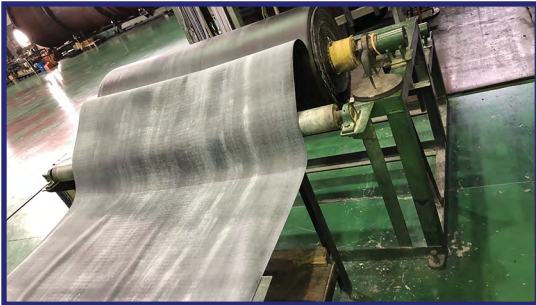
info@pacificmarine.net



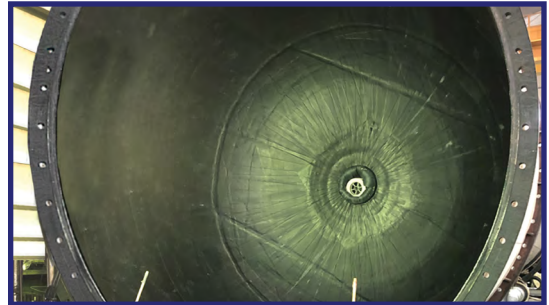
FENDER MOLD



AUTO CLAVE



CORDED RUBBER LAYER MANUFACTURING



FENDER CONSTRUCTION



ISO MARKINGS



COMPRESSION TESTING



BEAD RINGS AND FLANGES



12 TON HP FENDER WEIGHTS



OPEN TOP CONTAINER SHIPPING



REPAIR TOOLBOXES



PACIFIC MARINE & INDUSTRIAL

510-233-2310

www.pacificmarine.net

info@pacificmarine.net

Copyright © Quality Pacific Manufacturing, Inc.

50 kPa Initial Internal Pressure

| Nominal Size (Dia × Length) | Initial Internal Pressure | Guaranteed Energy Absorption (GEA) | Reaction Force at GEA (RF) | Hull Pressure at GEA (pr) | Safety Valve Setting pressure | Testing Pressure | Weight of Net Type (Type I) | | Weight Of Sling Type (Type II) | Body Thickness |
|--------------------------------|---------------------------------|---|-------------------------------------|------------------------------------|--|---------------------|--------------------------------|--------------|---|-------------------|
| | | | | | | | Fender Body | Chain Net | | |
| (mm × mm) | (kPa) | (kJm) | (kN) | (kPa) | (kPa) | (kPa) | (kg) | (kg) | (kg) | (mm) |
| 500 × 1000 | 50 | 6 | 64 | 132 | - | 200 | 24 | 110 | 32 | 12 |
| 600 × 1000 | 50 | 8 | 74 | 126 | - | 200 | 25 | 120 | 36 | 12 |
| 700 × 1500 | 50 | 17 | 137 | 135 | - | 200 | 45 | 150 | 55 | 13 |
| 1000 × 1500 | 50 | 32 | 182 | 122 | - | 200 | 73 | 200 | 98 | 14 |
| 1000 × 2000 | 50 | 45 | 257 | 132 | - | 200 | 88 | 220 | 113 | 14 |
| 1200 × 2000 | 50 | 63 | 297 | 126 | - | 200 | 131 | 320 | 156 | 14 |
| 1350 × 2500 | 50 | 102 | 427 | 130 | - | 200 | 200 | 350 | 240 | 15 |
| 1500 × 3000 | 50 | 153 | 579 | 132 | - | 200 | 250 | 530 | 290 | 16 |
| 1500 x 4000 | 50 | 230 | 815 | 130 | - | 200 | 330 | 580 | 380 | 16 |
| 1700 × 3000 | 50 | 191 | 639 | 128 | - | 200 | 290 | 638 | 330 | 16 |
| 2000 × 3500 | 50 | 308 | 875 | 128 | - | 200 | 405 | 960 | 465 | 17 |
| 2500 × 4000 | 50 | 663 | 1381 | 137 | 175 | 250 | 902 | 1240 | 1080 | 18 |
| 2500 × 5500 | 50 | 943 | 2019 | 148 | 175 | 250 | 1090 | 1850 | 1320 | 18 |
| 3300 × 4500 | 50 | 1175 | 1884 | 130 | 175 | 250 | 1460 | 1710 | 1840 | 20 |
| 3300 × 6500 | 50 | 1814 | 3015 | 146 | 175 | 250 | 1870 | 2570 | 2250 | 20 |
| 3300 × 10600 | 50 | 3067 | 5257 | 158 | 175 | 250 | 2560 | 4660 | 3060 | 22 |
| 4500 × 9000 | 50 | 4752 | 5747 | 146 | 175 | 250 | 3940 | 5390 | 4800- | 24 |
| 4500 × 12000 | 50 | 6473 | 7984 | 154 | 175 | 250 | 4790 | 6990 | - | 24 |
| 300 × 600 | 50 | 1.5 | 24 | 134 | - | 200 | 15 | - | 20 | 12 |
| 800 x 1500 | 50 | 24 | 158 | 132 | - | 200 | 64 | 280 | 72 | 14 |
| 1200 × 3000 | 50 | 109 | 482 | 134 | - | 200 | 250 | 435 | 280 | 14 |
| 1500 × 2500 | 50 | 123 | 464 | 126 | - | 200 | 243 | 484 | 287 | 16 |
| 1700 x 7200 | 50 | 516 | 1621 | 133 | - | 200 | 760 | N/A | 810 | 16 |
| 2000 × 3000 | 50 | 260 | 727 | 122 | - | 200 | 403 | 990 | 469 | 16 |
| 2000 x 4000 | 50 | 361 | 1020 | 125 | - | 200 | 490 | 1150 | 540 | 16 |
| 2000 x 6000 | 50 | 611 | 1631 | 136 | - | 200 | 658 | 1650 | 720 | 16 |
| 2500 × 9100 | 50 | 1631 | 3482 | 140 | 175 | 250 | 2150 | 3467 | 2230 | 18 |
| 3000 × 5000 | 50 | 1136 | 2021 | 154 | 175 | 250 | 1520 | 1800 | 1640 | 19 |
| 4500 × 7000 | 50 | 3792 | 4497 | 133 | 175 | 250 | 3500 | 4290 | 3880 | 24 |
| 4500 x 6400 | 50 | 3238 | 3796 | 133 | 175 | 250 | 3400 | 3900 | | 24 |

- Notes:**
1. Figures on the table comply with ISO 17357
 2. Weight of the fender body and net tolerance +/-10%
 3. Special sizes are available upon request



510-233-2310



www.pacificmarine.net



info@pacificmarine.net

80 kPa Initial Internal Pressure

| Nominal Size (Dia x Length) | Initial Internal Pressure | Guaranteed Energy Absorption (GEA) | Reaction Force at GEA | Hull Pressure at GEA | Safety Valve Setting pressure | Testing Pressure | Weight of Net Type (Type I) | | Weight Of Sling Type (Type II) | Body thickness |
|--------------------------------|---------------------------------|---|-----------------------------|----------------------------|--|---------------------|--------------------------------|--------------|---|-------------------|
| | | | | | | | Fender Body | Chain Net | | |
| (mm X mm) | (kPa) | (kNm) | (kN) | (kPa) | (kPa) | (kPa) | (kg) | (kg) | (kg) | (mm) |
| 500 X 1000 | 80 | 8 | 85 | 174 | - | 250 | 24 | 110 | 34 | 13 |
| 600 X 1000 | 80 | 11 | 98 | 166 | - | 250 | 27 | 120 | 38 | 13 |
| 700 X 1500 | 80 | 24 | 180 | 177 | - | 250 | 47 | 150 | 57 | 14 |
| 1000 X 1500 | 80 | 45 | 239 | 160 | - | 250 | 76 | 200 | 101 | 15 |
| 1000 X 2000 | 80 | 63 | 338 | 174 | - | 250 | 92 | 220 | 117 | 15 |
| 1200 X 2000 | 80 | 88 | 390 | 166 | - | 250 | 135 | 320 | 160 | 15 |
| 1350 X 2500 | 80 | 142 | 561 | 170 | - | 250 | 205 | 350 | 245 | 17 |
| 1500 X 3000 | 80 | 214 | 761 | 174 | - | 250 | 277 | 530 | 317 | 17 |
| 1500 x 4000 | 80 | 296 | 1053 | 176 | - | 250 | 330 | 690 | 378 | 17 |
| 1700 X 3000 | 80 | 267 | 840 | 168 | - | 250 | 316 | 580 | 356 | 17 |
| 2000 X 3500 | 80 | 430 | 1150 | 168 | - | 250 | 413 | 970 | 473 | 19 |
| 2500 X 4000 | 80 | 925 | 1815 | 180 | 230 | 300 | 1010 | 1250 | 1190 | 20 |
| 2500 X 5500 | 80 | 1317 | 2653 | 195 | 230 | 300 | 1230 | 1860 | 1460 | 20 |
| 3300 X 4500 | 80 | 1640 | 2476 | 171 | 230 | 300 | 1720 | 1720 | 2090 | 22 |
| 3300 X 6500 | 80 | 2532 | 3961 | 191 | 230 | 300 | 2200 | 2580 | 2570 | 22 |
| 3300 X 10600 | 80 | 4281 | 6907 | 208 | 230 | 300 | 3030 | 4660 | 3520 | 23 |
| 4500 X 9000 | 80 | 6633 | 7551 | 192 | 230 | 300 | 4380 | 5440 | 5100- | 26 |
| 4500 X 12000 | 80 | 9037 | 10490 | 202 | 230 | 300 | 5330 | 7030 | - | 26 |
| 300 X 600 | 80 | 0.6 | 31 | 173 | - | 250 | 17 | - | 20 | 13 |
| 800 X 1500 | 80 | 31 | 204 | 180 | - | 250 | 71 | 280 | 83 | 15 |
| 1200 X 3000 | 80 | 140 | 623 | 185 | - | 250 | 275 | 435 | 310 | 16 |
| 1500 X 2500 | 80 | 174 | 610 | 166 | - | 250 | 268 | 484 | 312 | 17 |
| 1700 x 7200 | 80 | 668 | 2096 | 170 | - | 250 | 795 | N/A | 845 | 18 |
| 2000 X 3000 | 80 | 363 | 955 | 160 | - | 250 | 413 | 990 | 479 | 19 |
| 2000 x 4000 | 80 | 520 | 1380 | 173 | - | 250 | 505 | 1150 | 535 | 19 |
| 2000 X 6000 | 80 | 791 | 2109 | 170 | 230 | 300 | 724 | 1650 | 810 | 18 |
| 2500 X 9100 | 80 | 2293 | 4505 | 199 | 230 | 300 | 2360 | 3467 | 2450 | 20 |
| 3000 x 5000 | 80 | 1593 | 2608 | 185 | 230 | 300 | 1670 | 1800 | 1850 | 21 |
| 4500 X 7000 | 80 | 4850 | 5540 | 174 | 230 | 300 | 4136 | 4301 | 4350 | 26 |
| 4500 x 6400 | 80 | 4518 | 4988 | 174 | 230 | 300 | 3760 | 3910 | | |

Notes:

1. Figures on the table comply with ISO 17357
2. Weight of the fender body and net tolerance +/-10%
3. Special sizes are available upon requested



510-233-2310



www.pacificmarine.net



info@pacificmarine.net

Information Required for Quotation Requests

Floating Fender Quotations:

- Diameter and Length
- CTN, Sling or Ribbed Type
- IF CTN, Then Truck or Aircraft Tires
- Body Color: Black, Grey, Red (Black is most cost effective)
- 50 or 80 kPa Initial Internal Pressure (50 kPa is the standard)
 - Quantity Needed
 - Delivery Location

Hydro Pneumatic Submarine Fender Quotations:

- Diameter and Length
- Freeboard of Fender (or Counterweight Size)
- 50 or 80 kPa Initial Internal Pressure (50 kPa is the standard)
 - Description of Guy (x2) and Hanging (x1) Rope or Chain
 - Type, Length, Size, Finish, etc.
 - Quantity Needed
 - Delivery Location



PACIFIC MARINE & INDUSTRIAL



510-233-2310



www.pacificmarine.net



info@pacificmarine.net



PACIFIC MARINE & INDUSTRIAL

510-233-2310

www.pacificmarine.net

info@pacificmarine.net

Copyright © Quality Pacific Manufacturing, Inc.