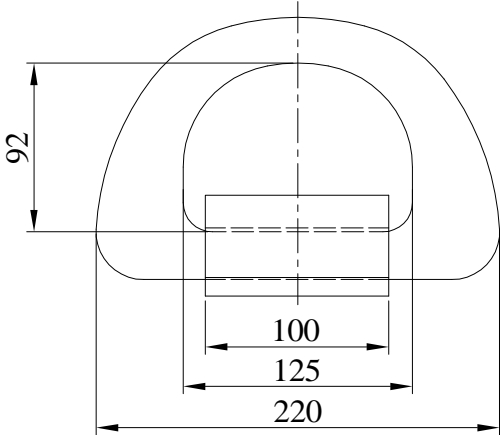
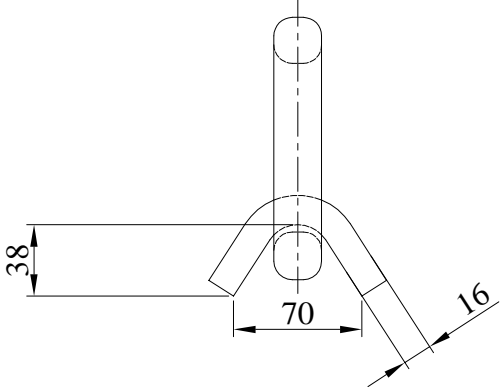
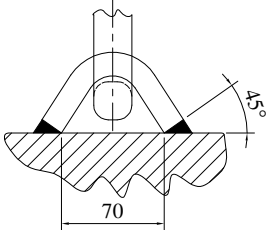


LIFTING POINT 10 TON SWL

PAL-A1-LIFT



Welding Recommendation



LOADS	SHEAR [KN]	TENSION [KN]
BREAKING LOAD	-	500
SWL LIFTING (5:1)	-	100

TOTAL WEIGHT	4.6 KG
MATERIAL	FORGED STEEL
FINISH	HOT DIP GALVANISED