

TL50 LED U

Innovative watertight LED luminaire



Description

The innovative LED outdoor lighting fixtures are applicable for a wide range of different areas, e.g. workshops, stores, passage ways etc.

They are designed to meet maritime requirements and to save energy and maintenance cost due to extreme long lifetime.

The TL50 LED U is UL Marine certified.

Technical specifications

Application

For areas like car decks, open decks, and other demanding applications such as extreme weather conditions at sea

Design

According to rules of maritime classification societies, additional VDE and IEC/EN

Ambient temperature (Ta)

Operation from -25°C up to +45°C in standard version

Housing

Seawater resistant, anodized aluminum housing.

Finish

Grey anodized

Electrical specification

Flexible wiring, heat resistant up to 105°C.

Light Source

LED

Mounting

Mounted to the ceiling or cable trays by: screws, different screwed mounting brackets, shock mounts or triangles are available. Mounting distance adjustable.



Authorized Distributor:
Pacific Marine & Industrial
www.pacificmarine.net
info@pacificmarine.net

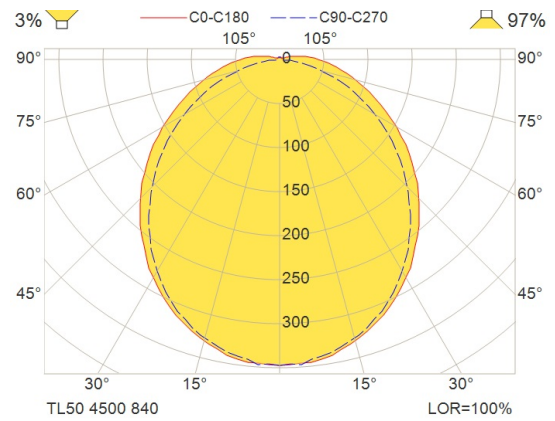
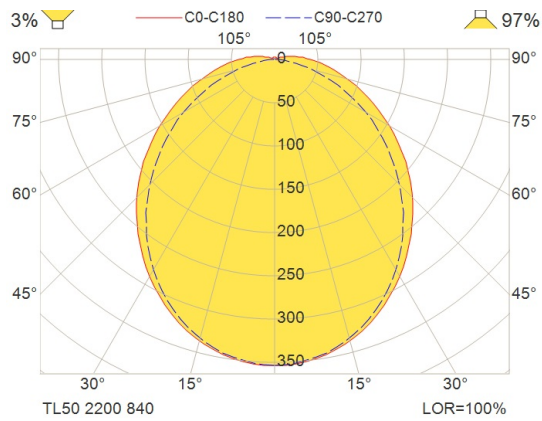
Connection

Connection box with cable entry 2xM25×1.5 polyamide D7-17mm and blind plugs 2xM25×1.5 polyamide Terminal 3-pole/4 mm²

Dimming

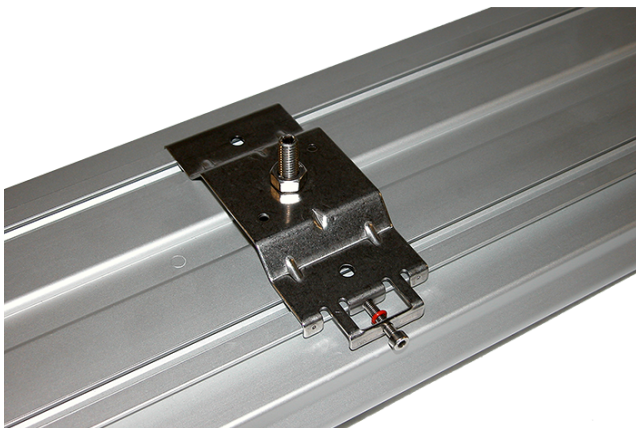
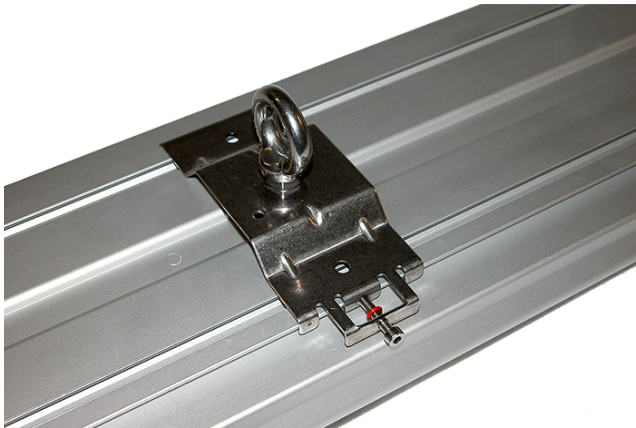
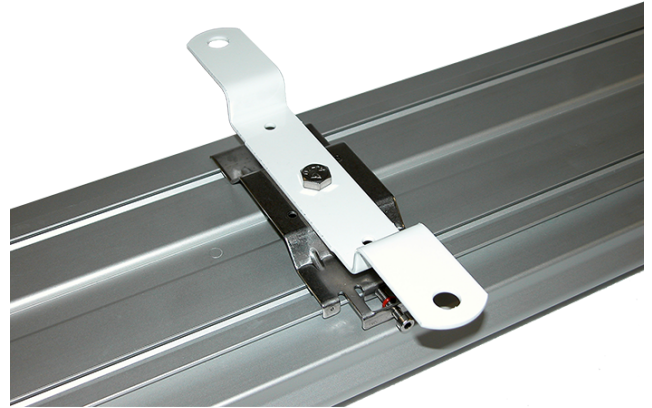
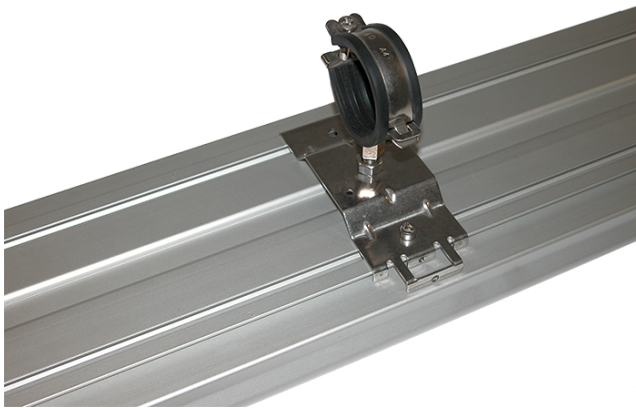
Available with dimmable driver.

Illustrations



Authorized Distributor:
Pacific Marine & Industrial
www.pacificmarine.net
info@pacificmarine.net

Images



Authorized Distributor:
Pacific Marine & Industrial
www.pacificmarine.net
info@pacificmarine.net