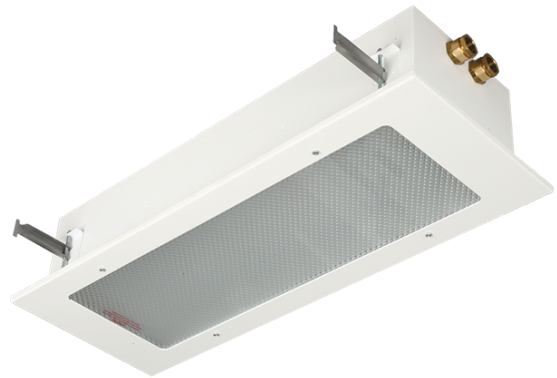


# GRX3 LED

Interior LED fixture for hazardous area,  
Zone 1



## Description

Explosion proof interior lighting fixtures are applicable for hazardous areas, zone 1. They are designed according to rules of maritime classification societies and IEC standards.

Ceiling recessed mounted luminaire for LED with easily adjustable mounting brackets, combined with front covers fitted to specific ceiling types. Electro-galvanised steel luminaire housing with white epoxy/ polyester powder coated paint finish. Front cover plates are to be ordered separately. Front covers with polycarbonate guard and with double prismatic diffusers (DP) as standard. Frame (FR) for 2 different ceilings: DAMPA/ DAN M300 or NORAC B500. Emergency 1,5 hour (E1) or 3 hours (E3). Frames for emergency as FR GRX3-E (integrated battery) or FR GRX-EB (batterybox).

Frame (FR) is to be ordered separately as it is accessories.

## Technical specifications

### Optic

DP: Frame with double prismatic plastic diffuser. Frame for adaption to actual ceiling type to be ordered separately. Frames: (FR GRX3..) to be ordered separately. Models available for different ceiling types, for luminaires with internal or external emergency and for standard luminaires.

### Application

Interior lighting fixture for use in marine and Ex-classified Zone 1 areas.

### Design

According to rules of maritime classification and IEC norms. For recessed installation in variants of panel ceilings.

### Housing

Steel powder coated white RAL 9016

### Electrical specification

Delivered with Ex-approved electronic ballast, HF. Available with emergency battery backup, internal battery (E1, E3) or external battery box (EB1, EB3). E1/S or EB1/S. 1,5 hours emergency E3/S or EB3/S, 3 hours emergency

### Light Source

LED



Authorized Distributor:  
**Pacific Marine & Industrial**  
www.pacificmarine.net  
info@pacificmarine.net

### Mounting

Recessed mounting with included suspension rails or adjustable swingarm brackets.

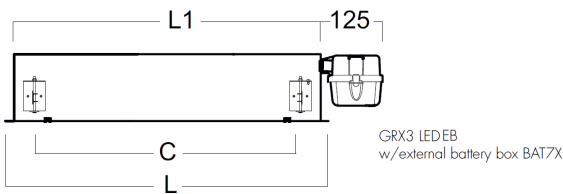
### Termination

Through wiring with one terminal block in each end for max 6 mm<sup>2</sup> wires.

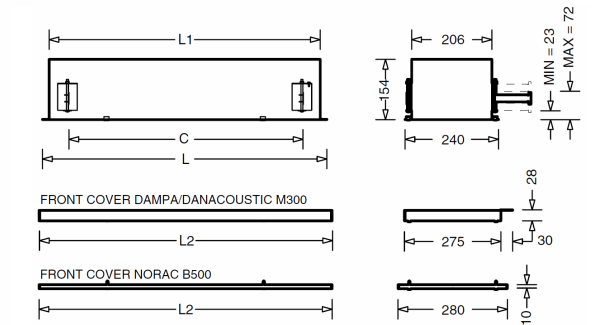
### Cable entry

One M25 Nickel plated Brass cable gland and one Nickel plated Brass blind plug in each end as standard, in external battery box only one cable gland.

## Illustrations

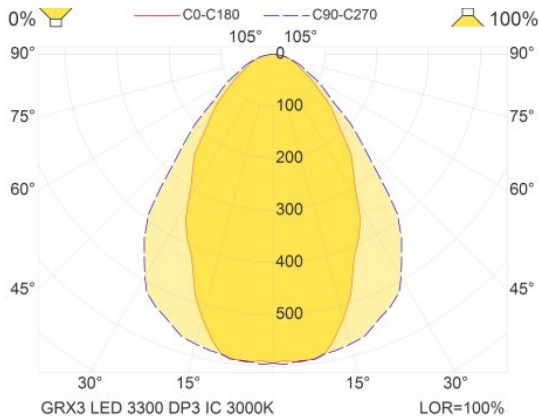
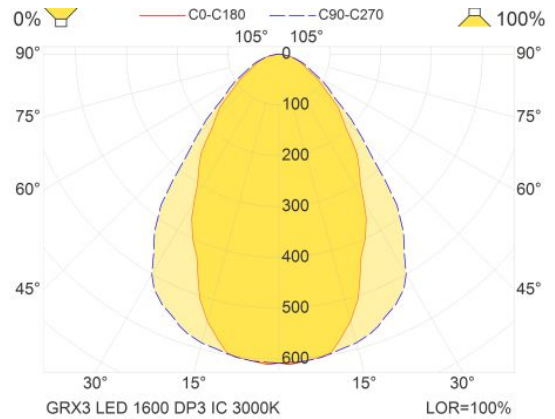
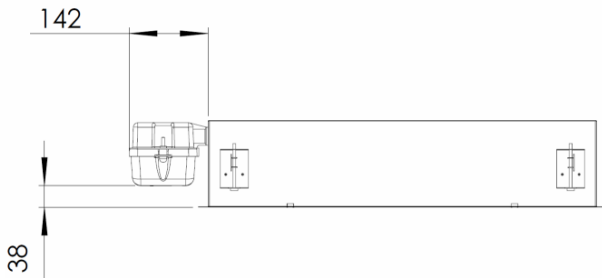


Type	L	L1	C	L2
1600	728	693	600	750
3300	1338	1303	1210	1365



Type	L	L1	C	L2
1600/1700/2500	728	693	600	750
3300/3700/5000	1338	1303	1210	1365
1600/1700/2500 EB	728	693+142	600	870
3300/3700/5000 EB	1338	1303+142	1210	1485

Type	1600/1700/2500	3300/3700/5000
GRX3 LED	240 x 715 mm	240 x 1315 mm
GRX3 LED EB	240 x 835 mm	240 x 1435 mm



Authorized Distributor:  
**Pacific Marine & Industrial**  
[www.pacificmarine.net](http://www.pacificmarine.net)  
[info@pacificmarine.net](mailto:info@pacificmarine.net)

## Images

