

GRX3 LED KIT

Interior LED KIT for hazardous area, Zone 1



Description

GRX3 LED KIT is a replacement kit to easy upgrade GRX3 T8 to an energy efficient LED solution. All necessary parts are included in the replacement kit.

For upgrade of GRX3 18W choose 1700 or 2500 Lumen.
For upgrade of GRX3 36W choose 3700 or 5000 Lumen.

Technical specifications

Application

For upgrade GRX3 T8 to GRX3 LED.

Design

According to rules of maritime classification and IEC norms.

Electrical specification

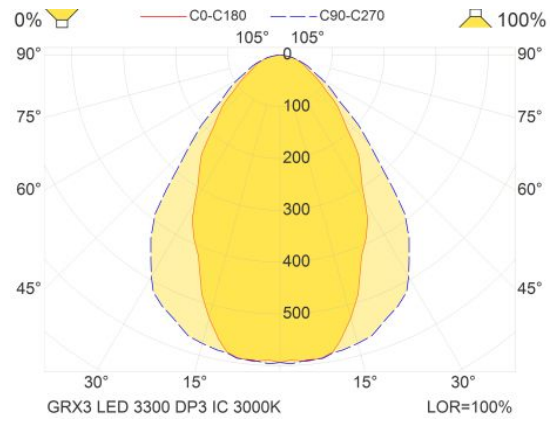
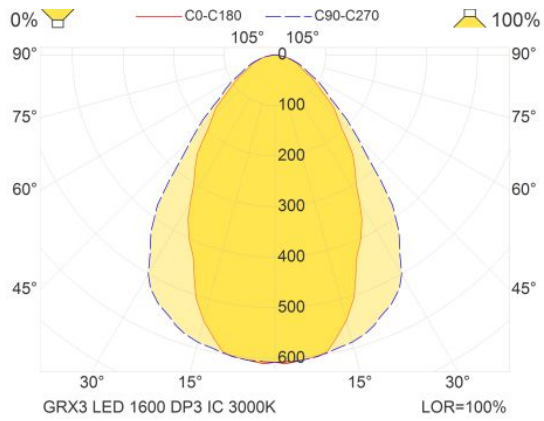
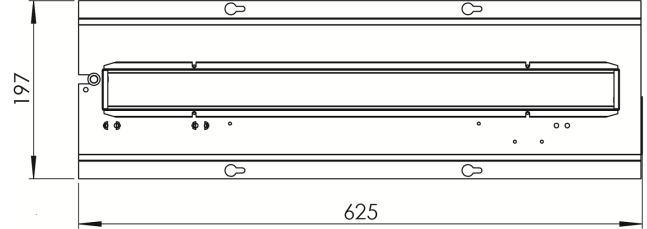
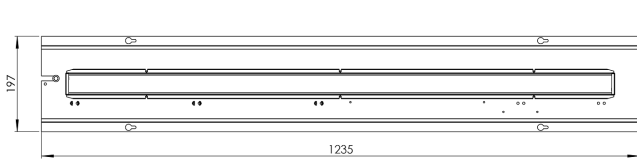
Delivered with Ex-approved electronic ballast, HF. Available with emergency battery backup, internal battery (E1, E3) or external battery box (EB1, EB3). E1/S or EB1/S, 1,5 hours emergency
E3/S or EB3/S, 3 hours emergency

Light Source

LED



Illustrations



Images



Authorized Distributor:
Pacific Marine & Industrial
www.pacificmarine.net
info@pacificmarine.net