



SL40 R5 Xenon

Searchlight



Description

The SL40 R5 is designed to meet marine requirements. Benefitting from low weight (Aluminium motorhouse and lamphouse), simple mounting and long run time, the design is clean and compact and all components are chosen to withstand corrosion.

The Searchlights are especially equipped for vessels with high demand of light output or operating in harsh winter and ice conditions such as tugs, icebreakers, offshore supply vessels or ice-classed vessels. The SL40 R5 Searchlights provide reliable lighting in a wide range of watt sizes and different voltages. They are also designed for arctic environments with temperatures down to -40 °C.

The SL40 R5 is operated by use of a control panel(s), with joystick and buttons, and are simple to install and operate.

Control System

The control system is based on a proven conventional electronic technology and a standard multi-core cable. Each searchlight can be controlled by unlimited number of main panels. The SL40 R5 is open to be operated in conjunction with the touch screen based R60 BUS control system. The main panel is delivered with a joystick and buttons for lamp on/off and horizontal/vertical speed adjustment. There are also versions available with lamp focus function. The main panel is delivered with a IP67 rating (from front) with a TA down to -20°C and up to +50°C.

The proven electronic technology used in the SL40 R5 enables long cable runs. Between control panels and the searchlight the cable run can be up 5000 meters, which simplifies

Built in Xenon Power Supply

The xenon 1000W SL40 R5 searchlight is delivered with a built in xenon power supply, excluding large and heavy external power supply's. This design enables easy installation (no external power supply TA values or IP-ratings to be considered) and significant cost savings, by reducing engineering and eliminating these cables and connections:

- Cable between power source and external power supply
- Cable between power supply and searchlight
- Remote signal cable between searchlight and power supply

Quality light output

SL40 R5 uses lamps from top of the line lamp manufacturers, combined with state of the art reflector technology, the searchlights delivers excellent light output for a variety of applications.

Mechanical movement



Authorized Distributor:
Pacific Marine & Industrial
www.pacificmarine.net
info@pacificmarine.net

The SL40 R5 is delivered with a geared motor drive for horizontal and vertical movement. The gear drive is a unique Norselight design, it is sealed for life, providing years of maintenance free operation in extreme conditions and applications.

Technical specifications

Scope of delivery

CFP = Complete searchlight, including main panel and power supply for xenon variants. Xenon variants always include focus adjustment.

Electrical specification

Searchlight XS 1000 is only available with integrated PSU NP-0725. For more details see User Manual.

Inclination speed

The slowest turning speed ('inclination speed') for the SL40 R5 XS1000 and XS2000 230V is $\leq 4^\circ/\text{s}$.

Light Source

Xenon

Accessories

Suitable for all kinds of ships, the control system is based on a proven conventional relay/transistor technology and a standard multi-core cable. Each searchlight can be controlled by unlimited number of main panels. The SL40 R5 is open to be operated in conjunction with the touch screen based R60 BUS control system. The main panel is delivered with a joystick and buttons for lamp on/off, horizontal and vertical speed adjustment. Vertical movement 60 degrees. There are also versions available with lamp focus function.

Optic

Adjustable beam on most versions, with a durable high polished aluminium reflector, specially designed for halogen lamps.

Electrical specification

Searchlight XS 1000 is only available with integrated PSU NP-0725. For more details see User Manual.

Housing

High quality seawater resistant aluminium housing finished in white polyester coating. Other RAL colours for housing on request.

Mounting

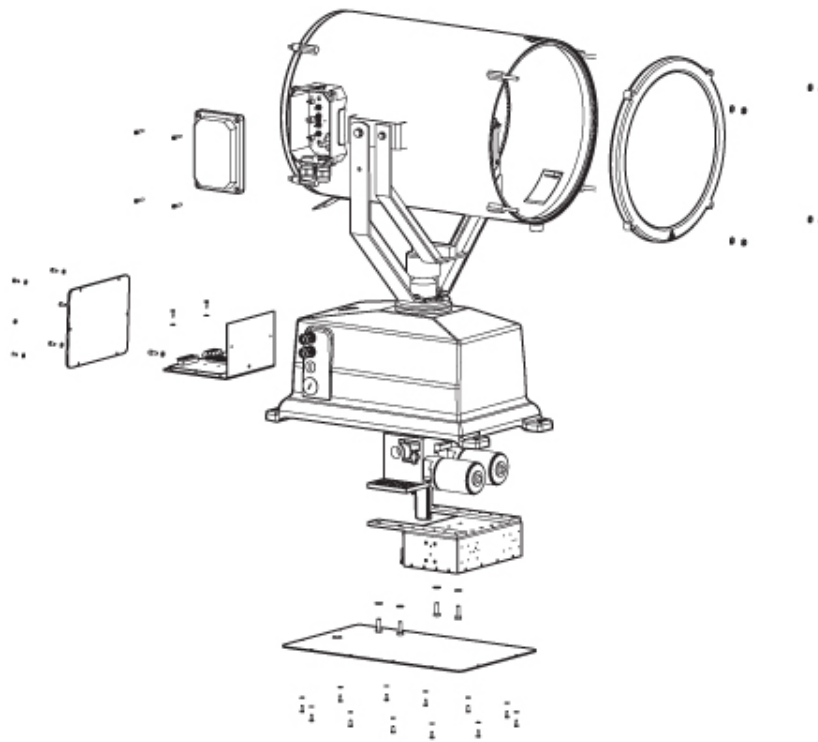
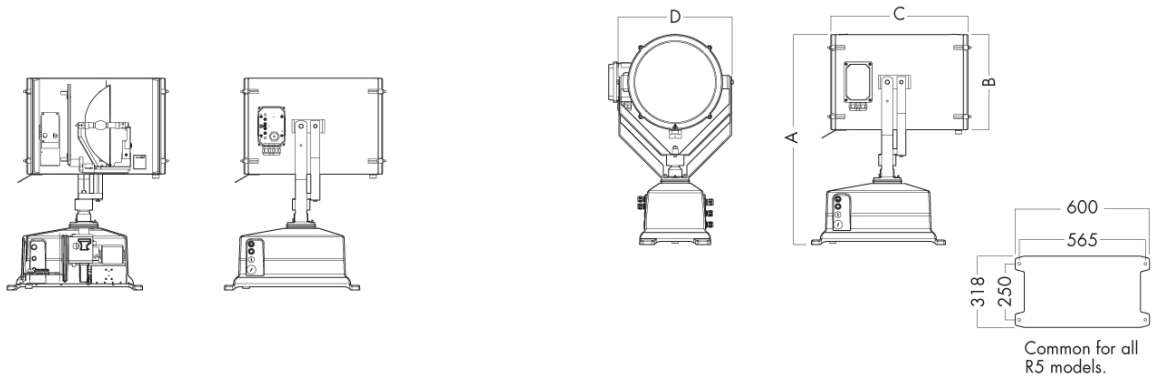
Easy mounting direct to deck or on pedestal

Connection

Connecting with cable glands in polyamide. Up to 5000 meters cable between main panel and searchlight.



Illustrations



Images

