

CL25 HMI Searchlight



Description

The product family CL25 is based on powerful HMI light technology. The dual head can be configured with dual white HMI, a combination white and UV or with dual UV. The CL25 is available in standing or in hanging version and with optional integrated IR thermal camera.

In combination with the special designed parabolic reflector this searchlight gives an extraordinary useful light performance that is ensured throughout the life of the bulb. The high color temperature in combination with the high color spectra (CRI) gives an impression of clear daylight with good contrasts of objects. It is very energy efficient providing a huge 66000 Lumen at only 800W.

The unlimited movement functionality offers limitless operational freedom and superior sea area coverage. In combination with the intelligent control system, it is possible to control many searchlights and control panels in network. The system is also open to be integrated with other systems onboard.

The proven design and mechanical concept is very solid and all mechanical structure is embedded inside the housing. This reduces problems coming from external influences like ice or corrosion. The housing itself is made in acid proof stainless steel and withstand the extreme tough marine environment.

The concept is developed over 20 years and is highly appreciated among mariners all over the world.

- A proven robust and functional design
- Marine resistant materials of highest class
- Maintenance free with monitored electrical motors.
- Unlimited maneuverability for superior sea area coverage
- Superior operator control system with system feedback
- Language selections in display
- Compact size
- Energy Efficient
- Powerful HMI
- High Lumen output
- 1 lux at 3200 m
- 66 000 Lm
- Wide focus range
- FiFi regulation compliance



- Standing or in hanging version
- Optional combinations with UV-light
- Optional with Integrated IR thermal camera
- Ready for integration

Technical specifications

Technology

Dual Head Searchlight with endless rotation in both pan und tilt. HMI light source with hot restrike and adjustable beam focus. Remote control and ready for integration.

Input power

100-240VAC, 50/60Hz Maximum Power Draw - 1070W

Body material and colour

Acidproof Stainless Steel. Powder coated in White RAL9016

Light output

66000 Lumen CRI >90 6000K

Beam angle

Adjustable 4-20°

Candela (measured)

10,7 MCd

Range with 1 lux at target

3200m

Weight

30kg

Dimensions

42×75×53cm

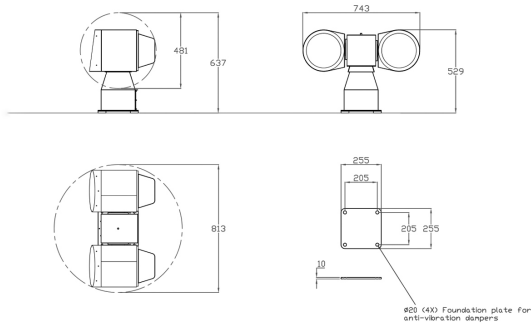
Others

For a working searchlight system also choose: -Ebox, for AC. -Cable lengths of mandatory cables, Power-/signal cables. -Operator panel and other accessories



Authorized Distributor:
Pacific Marine & Industrial
www.pacificmarine.net
info@pacificmarine.net

Illustrations



Build your searchlight system / CL25/35/38

Required Items to build a working searchlight system



Searchlight model

- Standing or Upside/Down
- IR thermal camera
- UV filter

Cables

Power and Signal cable
2m, 7m, 15m or 30m

Video Cable (for IR thermal camera)
10m, 20m or 40m

Cables connected from factory

Power supply

100-240VAC



Accessories

Control system



- Number of operator panels
- Ethernet switch
- Integration features
- Control cable Ethernet



Authorized Distributor:
Pacific Marine & Industrial
www.pacificmarine.net
info@pacificmarine.net

Images



Authorized Distributor:
Pacific Marine & Industrial
www.pacificmarine.net
info@pacificmarine.net