

DL42-R77 (B0 & B15)

LED Downlight for fire-approved ceilings



Description

The DL42-R77 is a compact LED-downlight specifically designed to be integrated into B0 or B15 fire approved metal ceilings. The use of fire resistant materials combined with a unique heat sink makes this downlight to the perfect choice for B15 metal ceilings. With the use of the DL42-R77 there is no need for any additional fire hats on the top of the metal ceiling to keep the B15 approval. The installation of the luminaire is easy with self-tapping screws. The DL42-R77 comes with an external driver. Various décor designs are available to customers choice. Designed only for usage in metal ceilings.

Technical specifications

Optic

24° or 38° lens optic. Optional 80° opal.

Decor

In chrome (CH) or white (WH). Other colours on request.

Light Source

LED 756 lumen out Colour rendering: CRI > 80, 3000 K Power consumption 8 W Lifetime: 50 000 hour, L70 at max Ta=45°C

Dali / external driver, DALI dimmable HFDa / external driver, 1-10V dimmable HFe / external driver, on/off PC / external driver, Phase cut dimmable

Mounting

Recessed mounting, fixed with 6 self-tapping screws. To be delivered with 300 mm cable.

Connection

Connection possibilities with ENSTO (QCE), WAGO (QCA) quick connector or cable without quick connector (C1).

Electrical specification

Different versions: DL42 HFe Switch on/off, external driver DL42 HFDa Dimmable, 1-10V, external driver DL42 Dali Dimmable, DALI, external driver DL42 PC Dimmable, phase cut, external driver



Authorized Distributor:
Pacific Marine & Industrial
www.pacificmarine.net
info@pacificmarine.net

Application

For all B15 rated pax, public and crew areas such as cabins, corridors, staircases, shops, libraries, lounges, restaurant. Designed only for useage in metal ceilings.

Design

Designed for B0 and B15 ceilings. Only for use in metal ceilings. According to marine classification societies and IEC standards

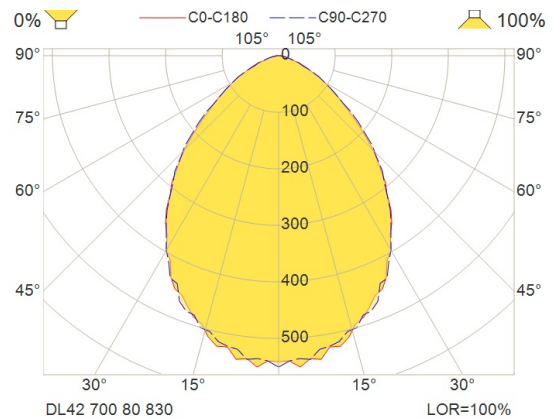
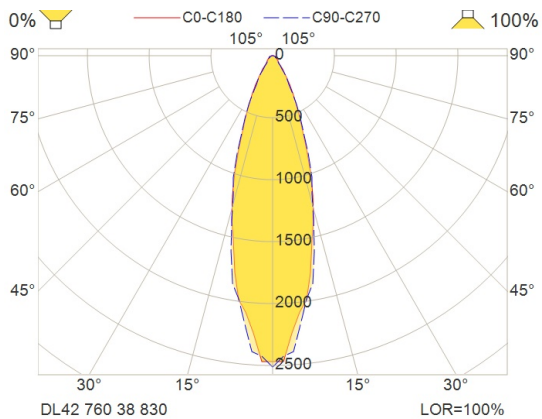
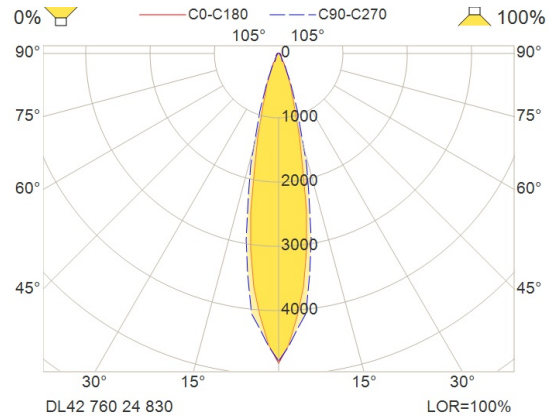
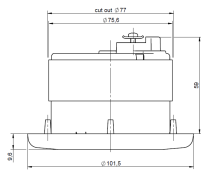
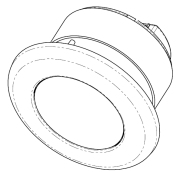
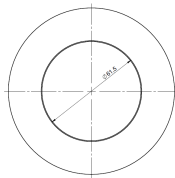
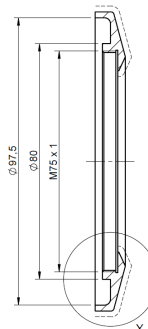
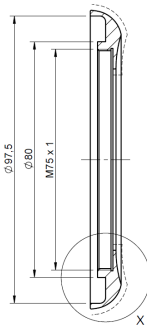
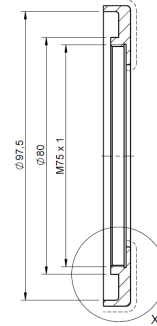
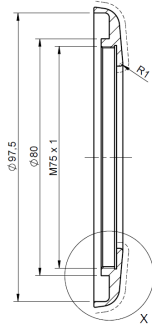
Housing

The mounting ring is made of 1.5mm thick steel plate and is screwed with self-tapping screws (not included in package) to the ceiling panel. The housing is specially designed to avoid temperature expanding and is made of stainless steel. The gap between the housing and the ceiling insulation will be closed under high temperatures by expanding graphite foam, which is located around the housing. The heat sink is made of aluminum and transfers the heat from the LED via the mounting ring into the ceiling panel.



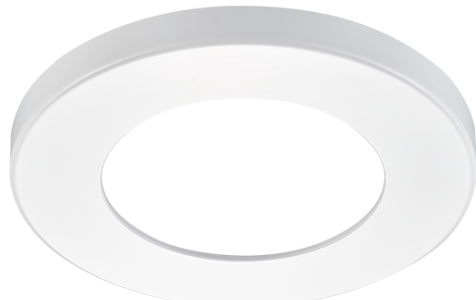


Illustrations





Images





Authorized Distributor:
Pacific Marine & Industrial
www.pacificmarine.net
info@pacificmarine.net