

# FL60N LED retrofit



## Description

Instant light, long lifetime, energy saving, low maintenance, enhanced light quality. For FL60

## Technical specifications

### Application

For decks and hulls, industrial areas Design: According to rules of maritime classification societies

### Approvals

N/A

### Ambient temperature (Ta)

Operation from -45°C up to +55°C in standard version

### Housing

Seawater resistant aluminium anodized module housing, stainless steel frame and mounting bracket

### Finish

Anodised modules, special colours on request

### Optic

Floodlight is available in wide beam, narrow beam or medium beam. With clear polycarbonate front cover. Floodlights available with 1 to 4 modules corresponding 4500lumen to 18000lumen in 5000K light colour.

### Electrical specification

Integrated IC driver available 120V or 230V 50/60Hz, power consumption of 40W per module, only. Modules connected in the external connection box.

### Light Source

Array of LEDs with 4500lumen output per module, with extreme long lifetime of 100.000hours at ambient temperature of 45°C.LED light colour: 4000K/840 or 5000K/850

### Mounting

Exchange complete module to replace conventional to LED luminaire.

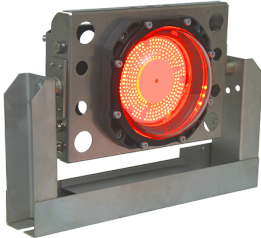


Authorized Distributor:  
**Pacific Marine & Industrial**  
www.pacificmarine.net  
info@pacificmarine.net

### Connection

External connection box at the back with 2 nickel plated brass cable glands M24 for cable diameter of 10mm to 14mm. Terminals for 6mm<sup>2</sup> external connection and through wiring.

### Images



Authorized Distributor:  
**Pacific Marine & Industrial**  
[www.pacificmarine.net](http://www.pacificmarine.net)  
[info@pacificmarine.net](mailto:info@pacificmarine.net)