



1076 LED

LED Floodlights with seamless housing of deep drawn stainless steel 316



Description

LED Floodlights with seamless housing of deep drawn stainless steel 316. The housing is powder coated white and enamelled up to 70-80 µm thickness. The floodlights provide extreme corrosion resistance and high light output.

Floodlights are designed according to rules of maritime classification societies, additional VDE and IEC/EN and are applicable for decks, rescue areas, holds, ramps, industrial and sport areas.

Technical specifications

Lumen Out

From 6000 lumenm to 13000 lumen.

Design

According to rules of maritime classification societies, additional IEC/EN.

Ambient temperature (Ta)

Ta = -20°C up to +45°C

Housing

Housing of deep drawn stainless steel ASIS 316

Finish

Powder coated white RAL 9016

Optic

Floodlight is available in narrow -20° - or wide-40° beam characteristic, with clear tempered safety glass front cover

Electrical specification

110-277 V AC 50/60Hz or 24 VDC version available

Light Source

LED

Mounting

Adjustable Stainless steel bracket.1 brass cable glands M24 x 1.5 MGCG; standard for cable dia. 10 to 12.5 mm



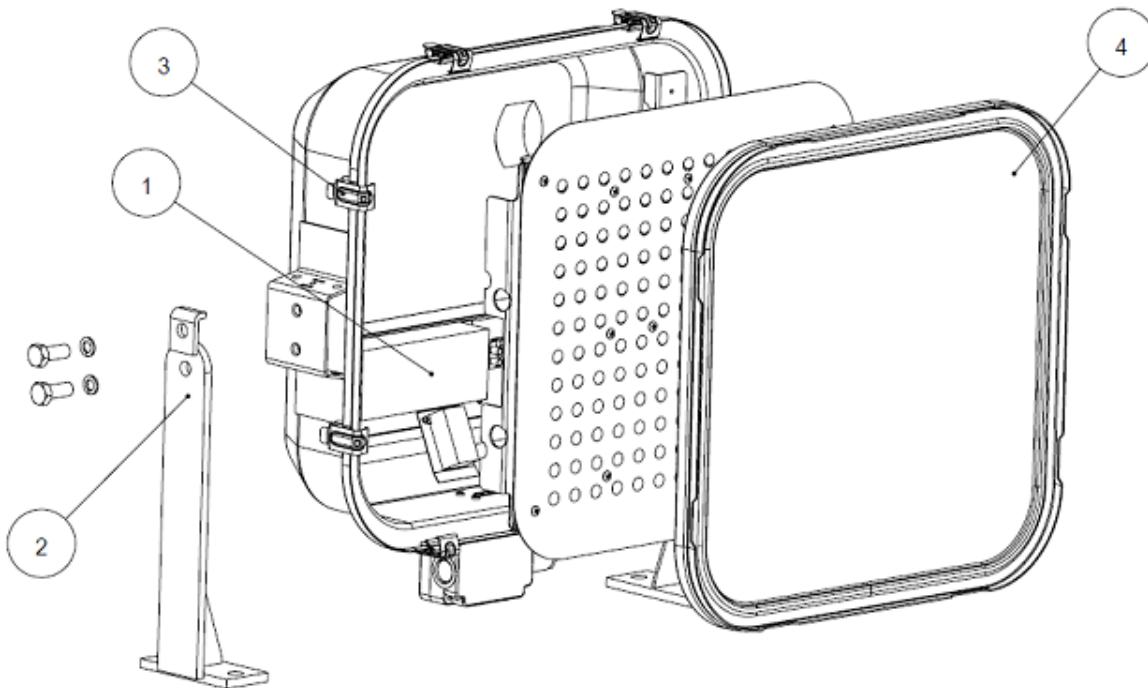
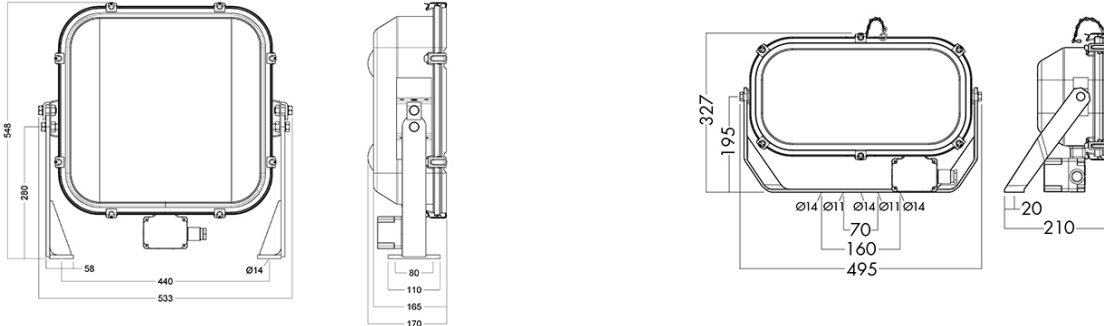
Authorized Distributor:
Pacific Marine & Industrial
www.pacificmarine.net
info@pacificmarine.net

Connection

1 connection box with one brass cable gland M24 x 1.5 MGCG for cable diameter of 10 mm to 12.5 mm each. Terminals for 6 mm² external connection.

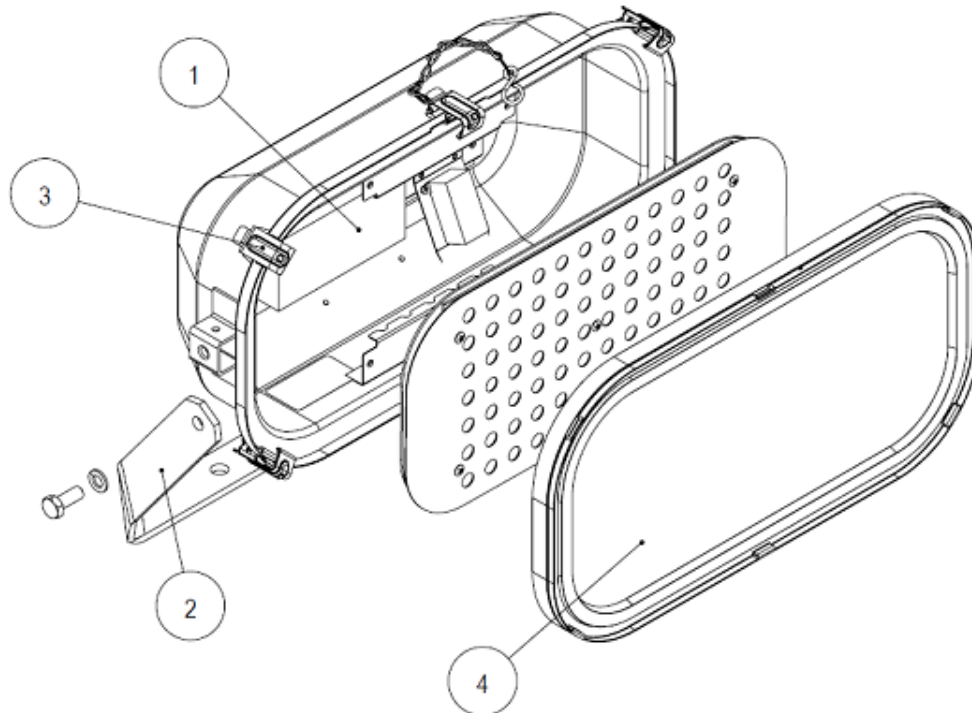


Illustrations



No.	Description	Spare part no.
1	LED Driver: Xitanium 100W	6003020080
2	Mounting bracket with screws 2PCS	9840090700
3	Clamps Cpl. 5pcs	9840221300
4	1076 LED Frame Unit	6000049900





No.	Description	Spare part no.
1	LED Driver:Xitanium 65W	6003020081
2	Mounting bracket with screws 1PC	9840022600
3	Clamps Cpl. 5pcs	9840221300
4	Frame Cpl. S316 Pane-cl 1pc	9840004900

Images

