

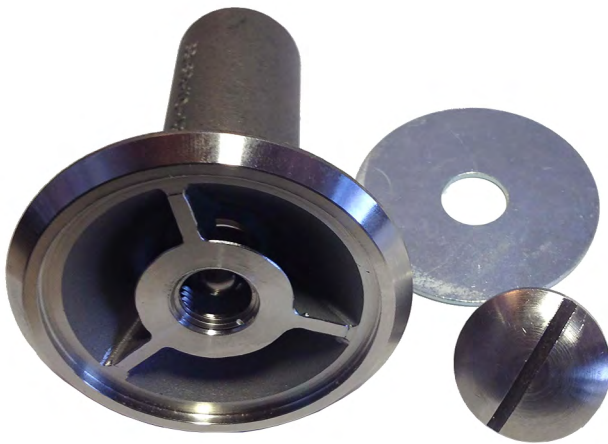


PACIFIC MARINE & INDUSTRIAL

MANUFACTURING ♦ DISTRIBUTION ♦ SERVICE

P-SB WASHDOWN NOZZLE

CUT SHEET



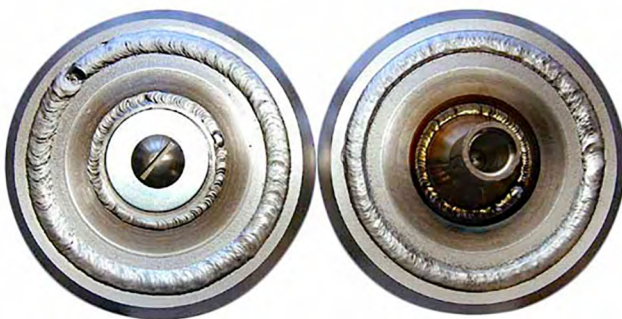
Weight:

1.0 lbs. (.45kg)*

*With Fender Washer and
Truss Head Machine Screw

Discharge Coefficient

5.1 GPM/psi ^{^ 1/2} (73.4 LPM/bar ^{^ 1/2})



(Shown with TriMetallic Ring)

P-SB Countermeasure Washdown Flush Deck Nozzle United States and NATO Navies

The P-SB type flush deck nozzles are for countermeasure washdown on US Navy and NATO Navy ships. They are welded into place flush with the deck. They are made of stainless construction and there is an option to provide a trimetallic ring for welding into aluminum decks.

To prevent debris from falling into the pipe system the P-SB nozzle has a ball check valve at its outlet. When water is flowing the ball is lifted and held in place by the structure of the nozzle.

Additionally, for yard periods or nearby maintenance work the P-SB nozzle is supplied with a washer and screw to completely cover the entire nozzle opening and keep all materials out of the nozzle head.

Technical Data:

Made to all the requirements of
NAVSEA Drawing 803-1385828

Markings:

P-SB Nozzle: SS-SB-110-.438 and PM&I
Replacement Web: SS SB



Quality Pacific Manufacturing, Inc., P.O. Box 70520 Richmond, CA USA 94807

510-233-2310

www.pacificmarine.net

info@pacificmarine.net

Copyright © Quality Pacific Manufacturing, Inc.

SCREW



WASHER

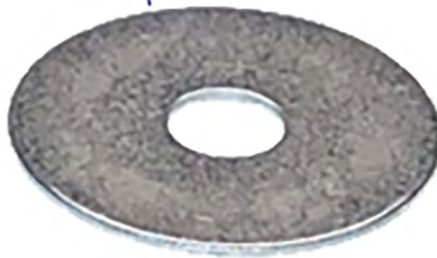


DEBRIS KIT:
FENDER WASHER
TRUSS HEAD MACHINE SCREW

SCREW



WASHER



REPAIR KIT:
FENDER WASHER
TRUSS HEAD MACHINE SCREW
WEB
THREADED INSERT
BALL



WEB



THREADED
INSERT



BALL

