

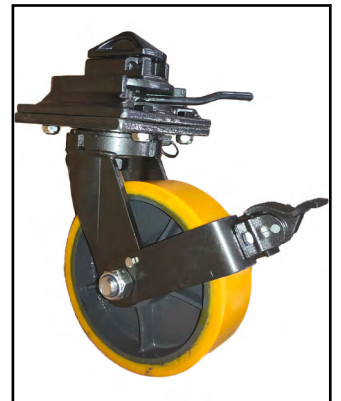


PACIFIC MARINE & INDUSTRIAL

MANUFACTURING ♦ DISTRIBUTION ♦ SERVICE

SHIPPING CONTAINER LIFTING

PRODUCT CATALOG



Spreader Frames and Bars
Container Casters
Dolly System
Towing System
Lift and Lower System
Container Stands
Container Lifting Lugs



Quality Pacific Manufacturing, Inc.,

P.O. Box 70520 Richmond, CA USA 94807

510-233-2310

www.pacificmarine.net

info@pacificmarine.net

Copyright © Quality Pacific Manufacturing, Inc.

TABLE OF CONTENTS

Container Spreader Frames..... 1

Container Spreader Bars..... 3

Container Lifting Lugs..... 4

Container Casters - Flat Surfaces 5

Container Casters - Flat Surfaces 6

Container Casters - Rough Surfaces..... 7

Container Dolly Systems..... 8

Container Lifting Jacks 9

Container Towing System 10

Container Lift and Lower System - Portable 11

Container Lift and Lower System - Fixed..... 12

Container Stand 13

Container Leveling Jacks..... 14



CONTAINER SPREADER FRAMES



Standard Container Spreaders Are Supplied With:

- Automatic Function (No Ground or Riding Personnel) Only The Crane Operator Includes Bull Ring And All Associated Wire Slings
- Safety Yellow Paint
- Side Marked With WLL
- Container Guides (Assist in Lowering To Container Top)

Class Approval On Request

Options And Modifications Available:

- Increase In Safe Working Load
- Forklift Pockets
- Wire Stowage Bollards
- Workman Walkways
- Container Balance Mechanism
- Units For Double Crane Hook

Item	20 Foot Spreader	40 Foot Spreader
SWL	32 Tons	36 Tons
Max. Capacity	40 Tons	45 Tons
Dead Weight	2.2 Tons	3.2 Tons
** Higher capacity spreaders are available.		

Overall Dimensions:		
Item	20 Foot Spreader	40 Foot Spreader
Distance Between Lock Centers (Length)	≈ 5853 mm	≈ 11985 mm
Distance Between Lock Centers (Width)	≈ 2260 mm	≈ 2260 mm
Overall Length	≈ 6054 mm	≈ 12186 mm
Overall Width	≈ 2610 mm	≈ 2610 mm
Frame Height	≈ 680 mm	≈ 700 mm



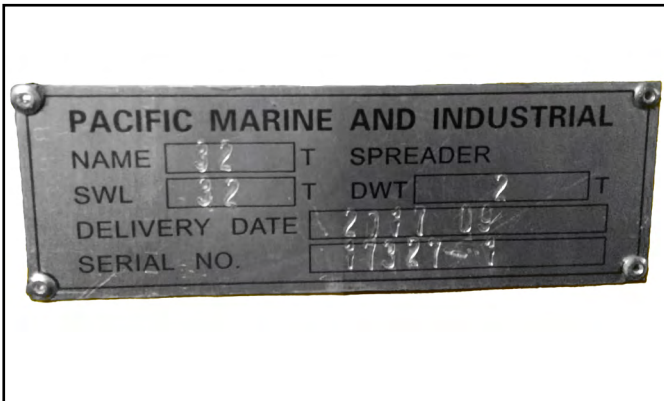
CONTAINER SPREADER FRAMES



Auto Open and Locked Indicator



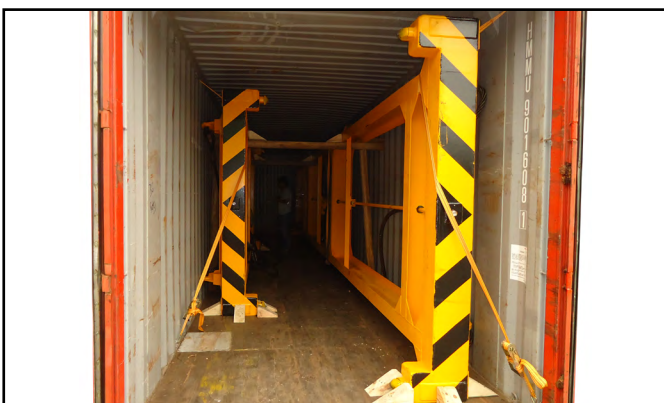
Automatic Operation Mechanism



Name Plate with Serial Number



SWL Side Mark



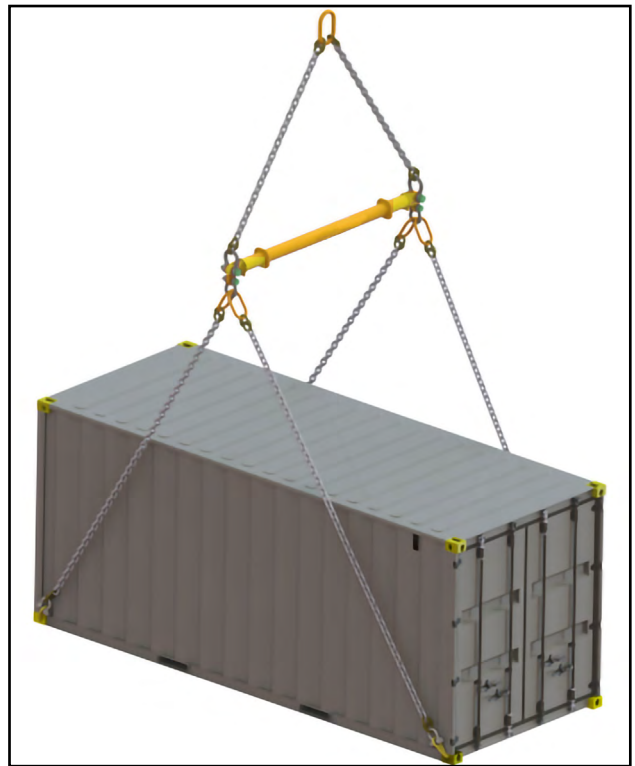
In Container Ready for Shipment



PM&I Side Mark



CONTAINER SPREADER BARS



20-Foot, 40-Foot or Custom

- Safe Working Load As Needed
- Stamped and Certified
- Length as Needed
- Chain, Wire Rope or Straps
- Multi Lifting Positions
- Multi Lifting Attachment Types



PACIFIC MARINE & INDUSTRIAL



510-233-2310



www.pacificmarine.net



info@pacificmarine.net

CONTAINER LIFTING LUGS



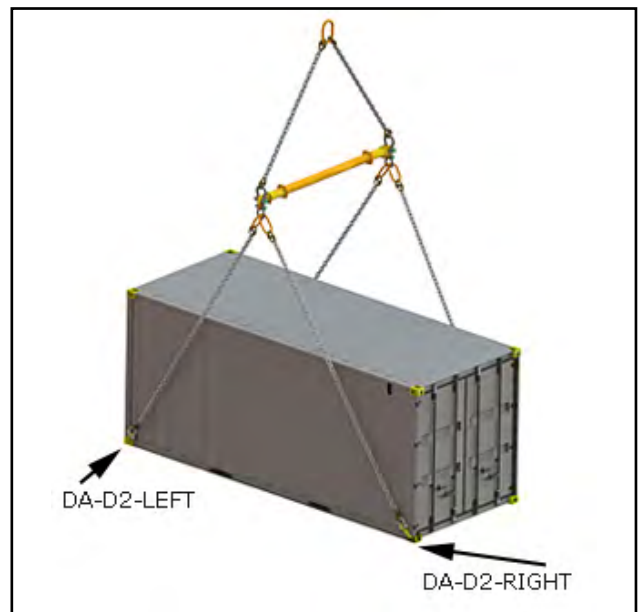
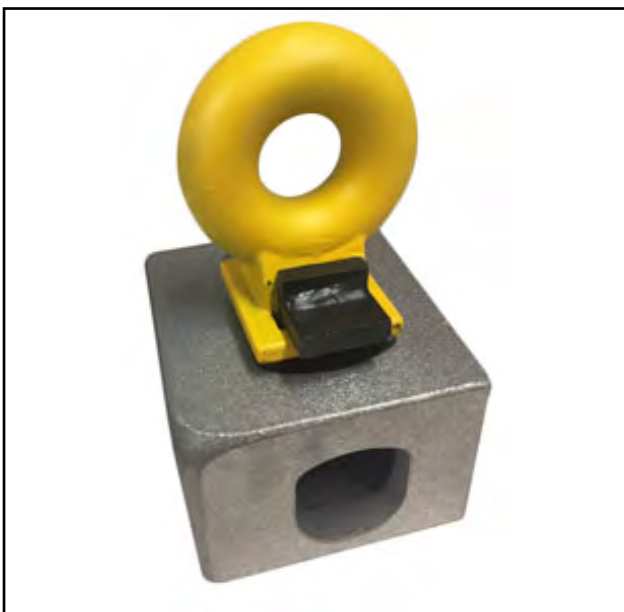
DA-D1
Top

Working Load Limit:
56 Metric Tons

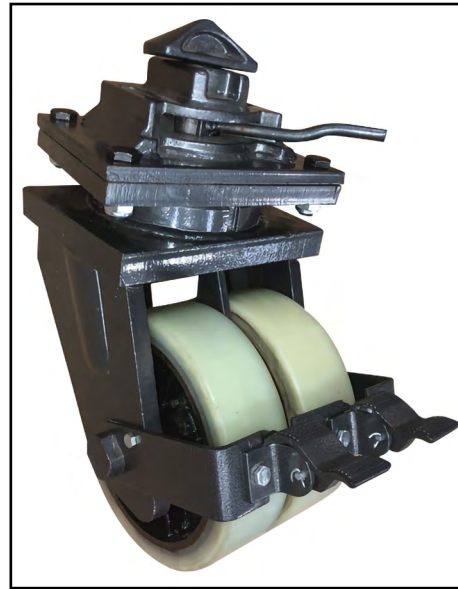
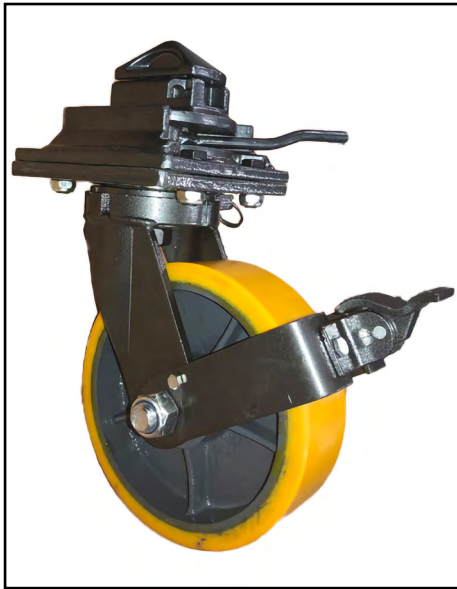


DA-D2

Left and Right for Bottom Side Holes
Working Load Limit:
36 Degrees: 40 Metric Tons
50 Degrees: 32 Metric Tons



CONTAINER CASTERS - FLAT SURFACES



Stock Casters Include:
 Swivel
 Swivel Lock
 Brakes
 Twistlock for ISO Container

If Shipping Container and Cargo Is Under 30 Tons,
 Casters Will Be Configured with Twistlock As Shown Above.

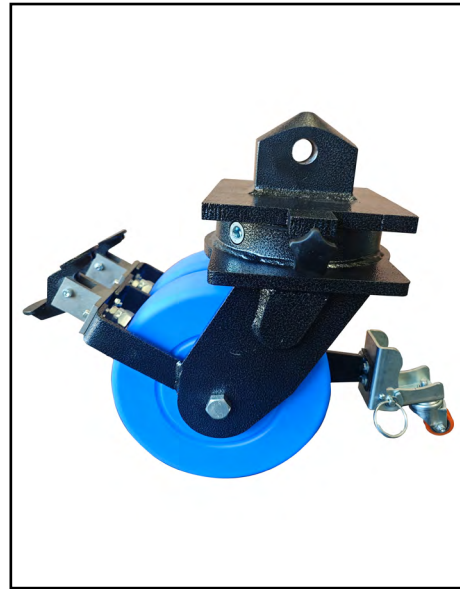
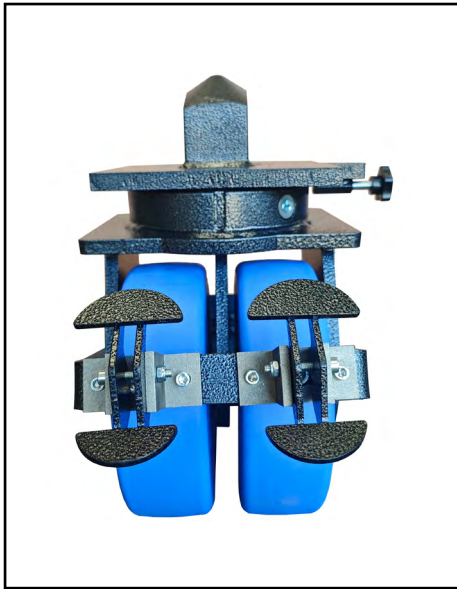
Shipping Containers Over 30 Tons Will Need Different Securing Configuration.

Caster Wheels Can Be Made According To Your Requirements.

Stock Caster Wheels					
Model	Caster Diameter	Capacity Each	Container Gross	Color	Weight Each
TL-SW-PCI-8-2TON	8" [200mm]	4,400 Lbs (2,000 kgs)	17, 600 Lbs. (8,000 kgs)	HUB: Silver Wheel: Yellow	55 lbs.
TL-SW-PCI-10-3TON	10" [250mm]	6,600 Lbs. (3,000 kgs)	26,400 lbs. (12,000 kgs)	HUB: Silver Wheel: Yellow	72 lbs.
TL-DW-NS-10-5TON	10" [250mm]	11,000 lbs [5,000 kgs]	44,000 lbs. (20,000 kgs)	HUB: Silver Wheel: Yellow	157 lbs
TL-DW-NS-10-8TON	10" [250mm]	17,600 lbs. (8,000 kgs)	70,400 lbs (16,000 kgs)	HUB: Silver Wheel: Yellow	168 lbs



CONTAINER CASTERS - FLAT SURFACES



Stock Casters Include:
 Swivel
 Swivel Lock
 Brakes
 Sidelock for ISO Container

If Shipping Container and Cargo Is Under 30 Tons,
 Casters Will Be Configured with Twistlock As Shown Above.

Shipping Containers Over 30 Tons Will Need Different Securing Configuration.

Caster Wheels Can Be Made According To Your Requirements.

Stock Caster Wheels					
Model	Caster Diameter	Capacity Each	Container Gross	Color	Weight Each
SL-DW-N-12-10TON	12" [300mm]	22,000 Lbs (10,000 kgs)	88,000 Lbs. (40,000 kgs)	HUB: Silver Wheel: Blue	157 lbs.
SL-DW-N-12-15TON	12" [300mm]	33,000 Lbs. (15,000 kgs)	132,000 lbs. (60,000 kgs)	HUB: Silver Wheel: Blue	168 lbs.



510-233-2310



www.pacificmarine.net



info@pacificmarine.net

CONTAINER CASTERS - ROUGH SURFACES



Stock Casters Include:
 Swivel
 Swivel Lock
 Brakes
 Twistlock for ISO Container

If Shipping Container and Cargo Is Under 30 Tons,
 Casters Will Be Configured with Twistlock As Shown Above.

Shipping Containers Over 30 Tons Will Need Different Securing Configuration.

Caster Wheels Can Be Made According To Your Requirements.

Stock Caster Wheels		
Model	Caster Diameter	Capacity Each
DW-R-16-1.25TON	412mm / 16.2 Inch Diameter	5 Ton Per Set of 4
DW-R-21-2.5TON	541mm / 21.3 Inch Diameter	10 Ton Per Set of 4



510-233-2310



www.pacificmarine.net



info@pacificmarine.net

CONTAINER DOLLY SYSTEMS



Hydraulic Self Lifting
Container Dolly



Manual
Container Dolly

ISO Shipping Container Dolly Systems

- Mobilize Loaded or Unloaded Shipping Containers
- Fits ISO Corner Castings for Shipping Containers
- Standard Capacity is 10, 25 or 30 Tons

- Container Casters Are Selected For Your Required Load Capacity and Application Environment
- Move Handle Forward to Lock or Backward to Unlock
- Swivel Lock and Caster Brakes Are Available
- Includes Tow Bar For Transport By Vehicle Or By Hand
- Double Or Triple Container Casters Are Available Per Application Requirement
- Lift Design Can Make Attaching Casters To Container A One Person Process
- Heavy Duty Casters Can Be Provided For Use In Sand, Gravel, Mud and Brush If Needed



Hydraulic Self Lifting
Container Dolly



Manual
Container Dolly



CONTAINER LIFTING JACKS



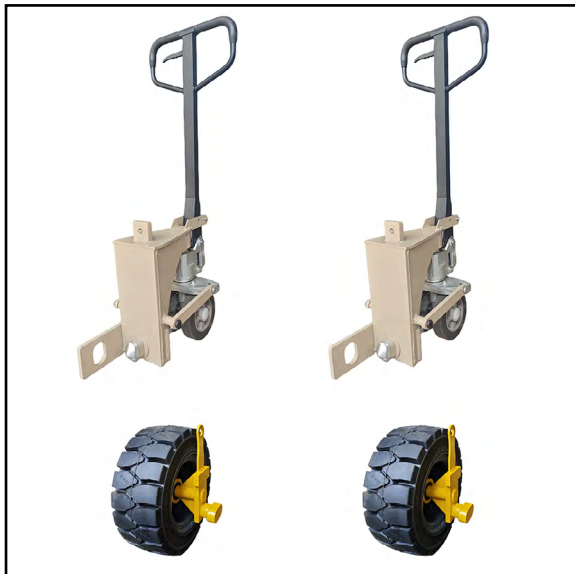
SCWJ Set



SCJJ Set

ISO Shipping Container Self Lifting Jack

Manual Hydraulic Pump Operated
For Container Movement and Placing in Yard



Stock Lifting Jack Sets

Model	Equipment	Ability	Capacity
SCWJ Set	(2) Jacks (2) Wheels	One End Fixed and One End Can Maneuver	5 Metric Ton
SCJJ Set	(4) Jacks	Both Ends Maneuver	8 Metric Ton



CONTAINER TOWING SYSTEM



ISO Shipping Container Towing Bar

Tow Bar Folds Compactly For Storage and Transport

Standard Capacity is 5, 10, 25 or 30 Tons

Twistlock Connector Ends Quickly Secure To The Bottom End of ISO 1161 Corner Castings
Twistlock Connector Ends Allow 20° Rotation For Height Difference Between Container and Towing Vehicle



510-233-2310

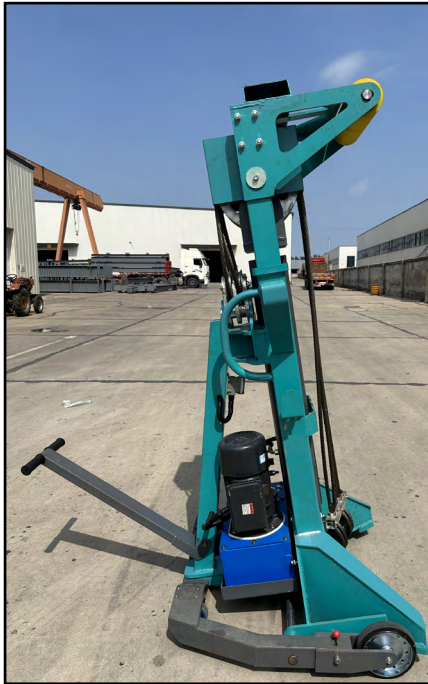


www.pacificmarine.net



info@pacificmarine.net

CONTAINER LIFT AND LOWER SYSTEM - PORTABLE



Forklift Portable System	
Description	Parameter(s)
Maximum Container Weight	40 metric tons
Load (lifting) Capacity of Each of 4 Units	10 metric tons
Lifting Height Off the Ground	160 cm 63 inches
Power Supply	380V 3 phase 60 hz or 220V 3 phase 60 hz
Controls	Wireless Remote Control
Number of Operators Required	1 person
Operating Temperature	From (-20) to (+40) degrees Celsius From (-4) to (104) degrees Fahrenheit
Weight of One	590kg / 1300 lbs.
Product Size for One	1.099*1.017*2.045M (retracted) 1.099*1.017*2.745M (extended)



CONTAINER LIFT AND LOWER SYSTEM - FIXED



Fixed In Place System

Description	Parameter(s)
Maximum Container Weight	40 metric tons
Load (lifting) Capacity of Each of 4 Units	10 metric tons
Lifting Height Off the Ground	160 cm 63 inches
Power Supply	380V 3 phase 60 hz or 220V 3 phase 60 hz
Controls	Wireless Remote Control
Number of Operators Required	1 person
Operating Temperature	From (-20) to (+40) degrees Celsius From (-4) to (104) degrees Fahrenheit
Weight	541 kg each x 4 1192 lbs each x 4
Product Size	1.234*1.110*2986M (retracted) 1.234*1.110*4586M (extended) /per unit * 4 units



CONTAINER STAND

2 Stands Per ISO Container

SWL of 40,000 lbs. (18 Tons) per Stand

Container Height When On Stands: 72 Inches

Custom Made Product Available

Left Locking Twistlocks Included



510-233-2310

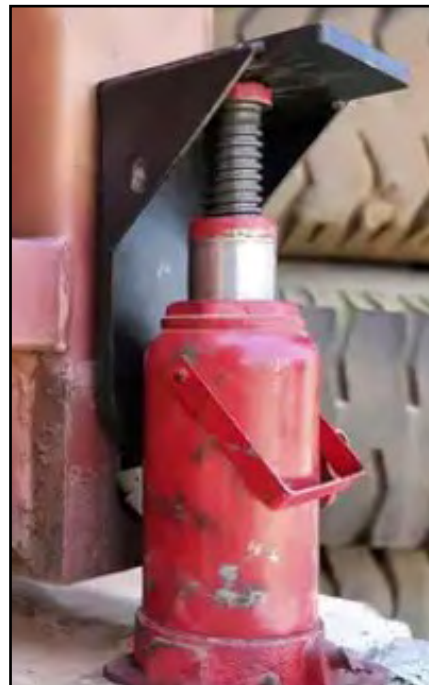


www.pacificmarine.net



info@pacificmarine.net

CONTAINER LEVELING JACKS



Lift One or Many Container Corners

7.5 Tons Safe Working Load Each

30 Tons Total Container Weight Using 4

Hydraulic Jack Not Included and Can Be Purchased At Local Home Improvement Store

