



# PACIFIC MARINE & INDUSTRIAL

## MANUFACTURING ◊ DISTRIBUTION ◊ SERVICE

### ALUMINUM CARGO SECURING

### PRODUCT CATALOG



**ROUND FLUSH TIE DOWN**

5.55 or 4.23 Inch Diameter  
Aluminum with SS Pin



**RECTANGULAR FLUSH TIE DOWN**

8.375 x 4.750 Inch  
Aluminum with SS Pin



**RECTANGULAR FLUSH TIE DOWN**

6.58 x 6.05 Inch  
Aluminum with SS Pin



**ROUND RAISED TIE DOWN**

7.5 Inch Diameter  
1/4 Inch Pin (Bent)



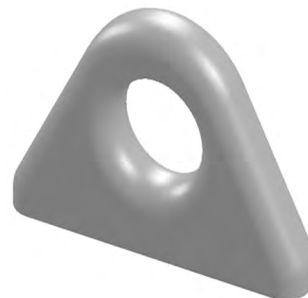
**BOW TOWING POCKET**

Install on Vessel Bow for Towing  
713 Aluminum



**CONTAINER FOUNDATIONS**

Flush, Dovetail, Raised  
Weld into Aluminum Deck  
Steel Fittings with Tri Metal Plate or Ring



**BOW EYE**

Single, High Capacity Single, or  
Double  
713 Aluminum



**BRAILER HOOK**

Standard or Raised  
713 Aluminum



**CLEATS**

Weld Down or Bolt Down  
A356 Aluminum  
Optional Bronze Material of Construction



**DECK CHOCKS**

Closed, Open and Bulwark  
Multiple Sizes  
A356 Aluminum



**BOAT SCUPPERS**

For Drain or Door  
A356 Aluminum



**HATCHES AND INSPECTION PORTS**

Rectangle, Oval or Round



Quality Pacific Manufacturing, Inc., P.O. Box 70520 Richmond, CA USA 94807



510-233-2310



www.pacificmarine.net



info@pacificmarine.net

Copyright © Quality Pacific Manufacturing, Inc.



**CONTAINER CORNER  
CASTINGS**

ISO 1161  
A356 with A T6 Temper



**PACIFIC MARINE & INDUSTRIAL**



510-233-2310



www.pacificmarine.net



info@pacificmarine.net