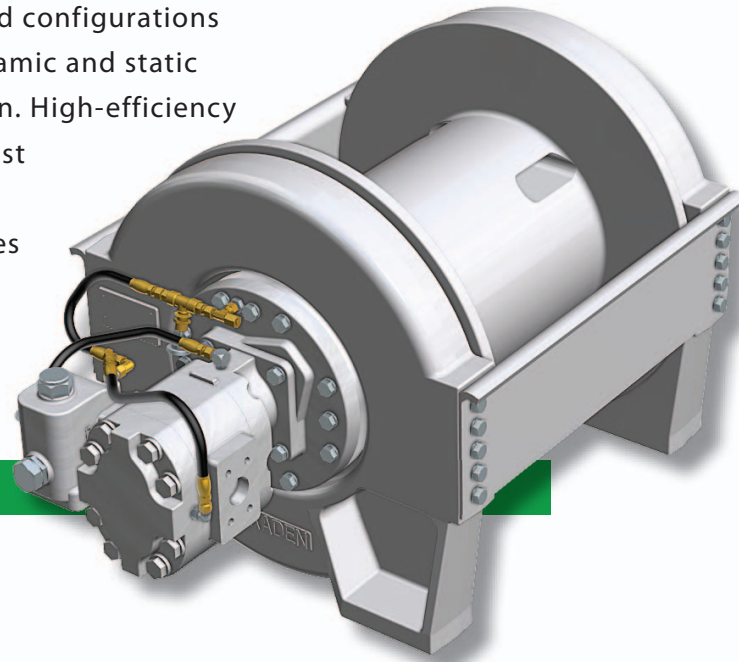


# BRADEN<sup>®</sup> CH165A CONSTRUCTION HOIST

## 16,500 lb (7,500 kg)

The BRADEN CH165A is part of a family of hoists designed to deliver the performance and durability demanded by severe offshore platform crane applications. Proven technology and tailored configurations generate ample line speed and lifting power. Dynamic and static braking features provide safe and secure operation. High-efficiency anti-friction bearings are used throughout the hoist to ensure long service life. Serving the needs of the offshore industry for more than four decades and supported by a worldwide network of trained service technicians, BRADEN hoists are preferred by engineers and operators alike.

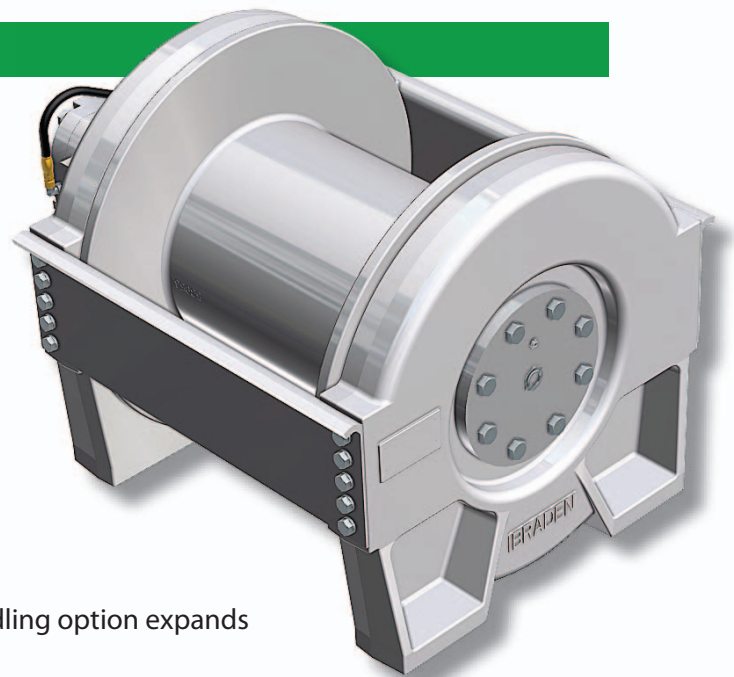


### Features/Benefits

- High-efficiency planetary reduction gearing produces line speeds up to 667 fpm (203 mpm) for optimal productivity and continuous duty
- Patented BRADEN brake valve enables smooth operation and precise load control
- Multi-disc static wet brake secures load in event of hydraulic pressure loss
- Integrated gearing in the drum minimizes overall dimensions for compact mounting envelope

### Options

- Hydraulic motor options to meet a variety of applications (consult factory for optional piston motor configuration)
- 25:1 gear ratio (-01 drum) or 26:1 gear ratio (-02 drum)
- Grooved drum
- Auxiliary drum brake (CH165A-AB)
- Ratchet and pawl configuration
- Drum rotation indicator compatibility
- Underwind (clockwise hoisting) configuration
- API Specification 2C-compliant personnel handling option expands functionality for crane and rig usage



**Drum Capacity (Standard)**

**-01 DRUM**

	LAYER	1	2	3	4	5	6	D/d
WIRE ROPE DIA	3/4 in.	80	169	267	374	490	615	18:1
	7/8 in.	69	147	234	330	434	-	15:1

**-02 DRUM**

	LAYER	1	2	3	4	5	6	D/d
WIRE ROPE DIA	3/4 in.	151	319	502	704	922	1,157	18:1
	7/8 in.	130	277	441	622	819	-	15:1

**Drum Capacity (Metric)**

**-01 DRUM**

	LAYER	1	2	3	4	5	6	D/d
WIRE ROPE DIA	19 mm	24	52	81	113	148	186	18:1
	22 mm	21	45	71	101	132	-	15:1

**-02 DRUM**

	LAYER	1	2	3	4	5	6	D/d
WIRE ROPE DIA	19 mm	46	97	153	215	281	353	18:1
	22 mm	40	84	134	190	250	-	15:1



Authorized Distributor:  
**Pacific Marine & Industrial**  
[www.pacificmarine.net](http://www.pacificmarine.net)  
[info@pacificmarine.net](mailto:info@pacificmarine.net)

### Performance

#### -01 Drum Single-speed Motor

RATIO		25:1					25:1					
MOTOR	090 (9.02 cu in.)	110 (11.0 cu in.)	120 (12.0 cu in.)	090 (147.8 cc)	110 (180.7 cc)	120 (197.1 cc)						
PRESSURE	3,000 psi	3,000 psi	3,000 psi	207 bar	207 bar	207 bar						
FLOW	125 gpm	155 gpm	170 gpm	473.1 lpm	586.7 lpm	643.5 lpm						
WIRE ROPE DIA.		3/4 in.					19 mm					
LAYER	LINE PULL (lb)	LINE SPEED (fpm)	LINE PULL (lb)	LINE SPEED (fpm)	LINE PULL (lb)	LINE SPEED (fpm)	LINE SPEED (kg)	LINE SPEED (Mpm)	LINE SPEED (kg)	LINE SPEED (fpm)	LINE SPEED (kg)	LINE SPEED (fpm)
1	11,970	416	15,040	429	16,500	434	5,430	127	6,820	131	7,485	132
2	10,770	462	13,530	477	14,850	482	4,885	141	6,135	145	6,735	147
3	9,790	508	12,300	524	13,500	530	4,440	155	5,580	160	6,125	162
4	8,980	555	11,280	572	12,370	579	4,070	169	5,120	174	5,610	176
5	8,290	601	10,410	620	11,420	627	3,760	183	4,720	189	5,180	191
6	7,690	647	9,670	667	10,610	675	3,490	197	4,385	203	4,810	206
WIRE ROPE DIA.		7/8 in.					22 mm					
1	11,970	420	15,040	433	16,500	438	5,430	128	6,820	132	7,485	133
2	10,610	474	13,330	488	14,620	494	4,815	144	6,045	149	6,630	151
3	9,520	528	11,970	544	13,130	550	4,320	161	5,430	166	5,955	168
4	8,640	582	10,860	600	11,910	607	3,920	177	4,925	183	5,400	185
5	7,910	636	9,940	655	10,900	663	3,590	194	4,510	200	4,945	202

#### -02 Drum Single-speed Motor

RATIO		26:1					26:1					
MOTOR	090 (9.02 cu in.)	110 (11.0 cu in.)	120 (12.0 cu in.)	090 (147.8 cc)	110 (180.7 cc)	120 (197.1 cc)						
PRESSURE	3,000 psi	3,000 psi	2,800 psi	209 bar	207 bar	198 bar						
FLOW	125 gpm	155 gpm	170 gpm	473.1 lpm	586.7 lpm	643.5 lpm						
WIRE ROPE DIA.		3/4 in.					19 mm					
LAYER	LINE PULL (lb)	LINE SPEED (fpm)	LINE PULL (lb)	LINE SPEED (fpm)	LINE PULL (lb)	LINE SPEED (fpm)	LINE SPEED (kg)	LINE SPEED (Mpm)	LINE SPEED (kg)	LINE SPEED (fpm)	LINE SPEED (kg)	LINE SPEED (fpm)
1	12,450	400	15,640	413	16,500	417	5,645	122	7,110	126	7,500	127
2	11,200	444	14,080	459	14,850	464	5,080	135	6,400	140	6,750	141
3	10,180	489	12,800	504	13,500	510	4,615	149	5,820	154	6,135	155
4	9,330	533	11,730	550	12,370	556	4,230	162	5,330	168	5,625	169
5	8,620	578	10,830	596	11,420	603	3,910	176	4,925	182	5,190	184
6	8,000	622	10,050	642	10,610	649	3,630	190	4,570	196	4,825	198
WIRE ROPE DIA.		7/8 in.					22 mm					
1	12,450	404	15,640	417	16,500	422	5,645	123	7,095	127	4,785	130
2	11,030	455	13,860	470	14,620	475	5,005	139	6,285	143	6,630	277
3	9,910	507	12,440	523	13,130	529	4,495	155	5,645	159	5,955	441
4	8,990	559	11,290	577	11,910	583	4,080	170	5,120	176	5,400	622
5	8,230	611	10,330	630	10,900	638	3,735	186	4,685	192	4,45	819



# CH165A CONSTRUCTION HOIST

## 16,500 lb (7,500 kg)

# BRADEN®

## Performance (cont.)

### -01 Drum Two-speed Motor

RATIO		25:1				25:1			
MOTOR	Low: 064 (6.38 cu in.)	Hi: 128 (12.75 cu in.)		Low: 064 (104.5 cc)		Hi: 128 (208.9 cc)			
PRESSURE	2,800 psi				193 bar				
FLOW	85 gpm				322 lpm				
WIRE ROPE DIA	3/4 in.				19 mm				
LAYER	LINE PULL (lb)	LINE SPEED (fpm)	LINE PULL (lb)	LINE SPEED (fpm)	LINE PULL (kg)	LINE SPEED (Mpm)	LINE PULL (kg)	LINE SPEED (Mpm)	
1	16,500	181	6,360	391	7,485	55	2,885	119	
2	14,850	202	5,720	435	6,735	62	2,600	133	
3	13,500	222	5,200	478	6,125	68	2,360	146	
4	12,370	242	4,770	522	5,610	74	2,165	159	
5	11,420	262	4,400	565	5,180	80	1,995	172	
6	10,610	282	4,090	609	4,815	86	1,855	186	

### -02 Drum Two-speed Motor

RATIO		26:1				26:1			
MOTOR	Low: 064 (6.38 cu in.)	Hi: 128 (12.75 cu in.)		Low: 064 (104.5 cc)		Hi: 128 (208.9 cc)			
PRESSURE	2,700 psi				184 bar				
FLOW	85 gpm				322 lpm				
WIRE ROPE DIA	3/4 in.				19 mm				
LAYER	LINE PULL (lb)	LINE SPEED (fpm)	LINE PULL (lb)	LINE SPEED (fpm)	LINE PULL (kg)	LINE SPEED (Mpm)	LINE PULL (kg)	LINE SPEED (Mpm)	
1	16,500	174	6,360	391	7,485	53	2,885	115	
2	14,850	194	5,720	435	6,735	59	2,600	127	
3	13,500	213	5,200	478	6,125	65	2,360	140	
4	12,370	233	4,770	522	5,610	71	2,165	153	
5	11,420	252	4,400	565	5,180	77	1,995	165	
6	10,610	272	4,090	609	4,815	83	1,855	178	



Authorized Distributor:  
Pacific Marine & Industrial  
www.pacificmarine.net  
info@pacificmarine.net

[www.paccarwinch.com](http://www.paccarwinch.com)

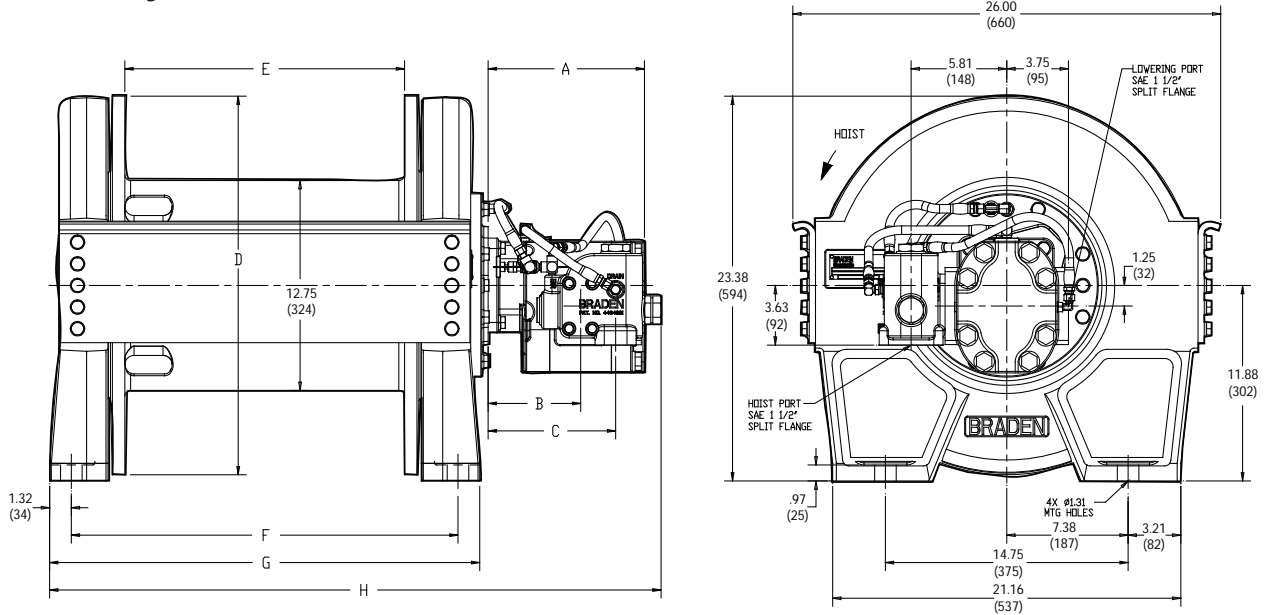
Pacific Marine & Industrial - [www.pacificmarine.net](http://www.pacificmarine.net)

# BRADEN<sup>®</sup> CH165A CONSTRUCTION HOIST

## 16,500 lb (7,500 kg)

### Dimensions

CH165A (generic)



**-01 DRUM** DIMENSION VARIABLES, in.

MOTOR, cu-in	A	B	C	D	E	F	G	H
9.02	9.0	5.38	7.5	23	17	23.5	26.14	36.36
11.0	9.5	5.63	7.75	23	17	23.5	26.14	37.16
12.0	9.75	5.75	7.88	23	17	23.5	26.14	37.29
064/128	15	6.47	8.13	23	17	23.5	26.14	41.1

**-0 DRUM**

90	9.0	5.38	7.5	22.75	32	38.5	41.14	51.36
110	9.5	5.63	7.75	22.75	32	38.5	41.14	51.61
120	9.75	5.75	7.88	22.75	32	38.5	41.14	52.29
064/128	15	6.47	8.13	22.75	32	38.5	41.14	56.1

**-01 DRUM** DIMENSION VARIABLES, mm

MOTOR, cc	A	B	C	D	E	F	G	H
147.8	229	137	191	584	432	597	664	924
180.7	241	143	197	584	432	597	664	944
197.1	248	146	200	584	432	597	664	947
104.5/208.9	381	164	206	584	432	597	664	1044

**-02 DRUM**

147.8	229	137	191	578	813	978	1050	1304
180.7	241	143	197	578	813	978	1050	1311
197.1	248	146	200	578	813	978	1050	1328
104.5/208.9	381	164	206	578	813	978	1050	1425



Authorized Distributor:  
**Pacific Marine & Industrial**  
[www.pacificmarine.net](http://www.pacificmarine.net)  
[info@pacificmarine.net](mailto:info@pacificmarine.net)

[www.paccarwinch.com](http://www.paccarwinch.com)

Pacific Marine & Industrial - [www.pacificmarine.net](http://www.pacificmarine.net)

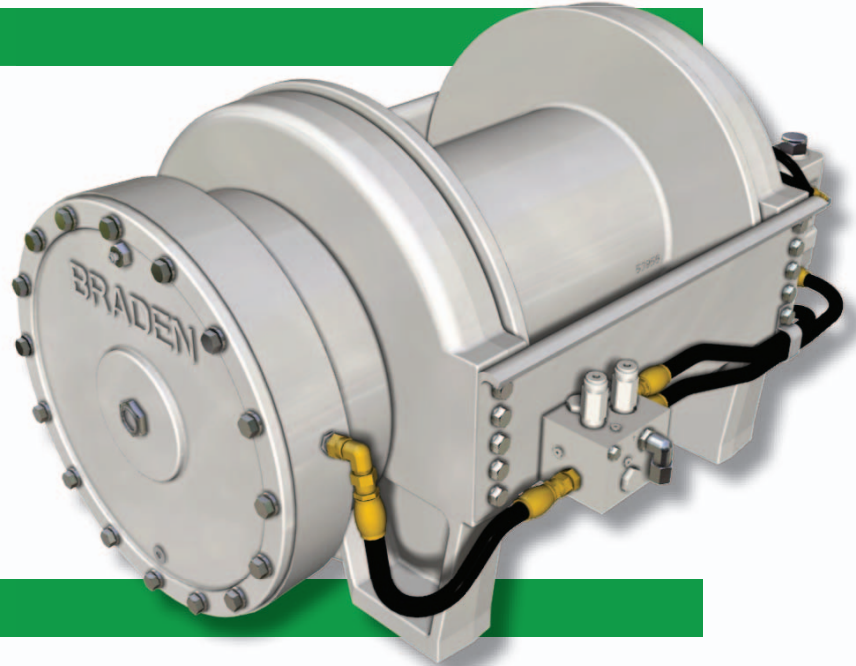
# CH165A-AB CONSTRUCTION HOIST 13,730 lb (6,240 kg)

# BRADEN®

The BRADEN CH165A-AB is available in a 26:1 gear ratio and 12.0 cu -in. (197 cc) high-efficiency motor.

## Auxiliary Brake Features

- Completely enclosed; all components operate in oil and protected from environment
- No periodic adjustment required
- Ease of serviceability and testing



## Drum Capacity

		ft							
		LAYER	1	2	3	4	5	6	D/d
-01 DRUM	WIRE ROPE DIA	3/4 in.	80	169	267	374	490	615	18.1
		7/8 in.	69	147	234	330	434	-	15:1

		ft							
		LAYER	1	2	3	4	5	6	D/d
-02 DRUM	WIRE ROPE DIA	3/4 in.	151	319	502	704	922	1,157	18.1
		7/8 in.	130	277	441	622	819	-	15:1

		m							
		LAYER	1	2	3	4	5	6	D/d
-01 DRUM	WIRE ROPE DIA	19 mm	24	52	81	113	148	186	18.1
		22 mm	21	45	71	101	132	-	15:1

		m							
		LAYER	1	2	3	4	5	6	D/d
-02 DRUM	WIRE ROPE DIA	19 mm	46	97	153	215	281	353	18.1
		22 mm	40	84	134	190	250	-	15:1



Authorized Distributor:  
Pacific Marine & Industrial  
www.pacificmarine.net  
info@pacificmarine.net

[www.paccarwinch.com](http://www.paccarwinch.com)

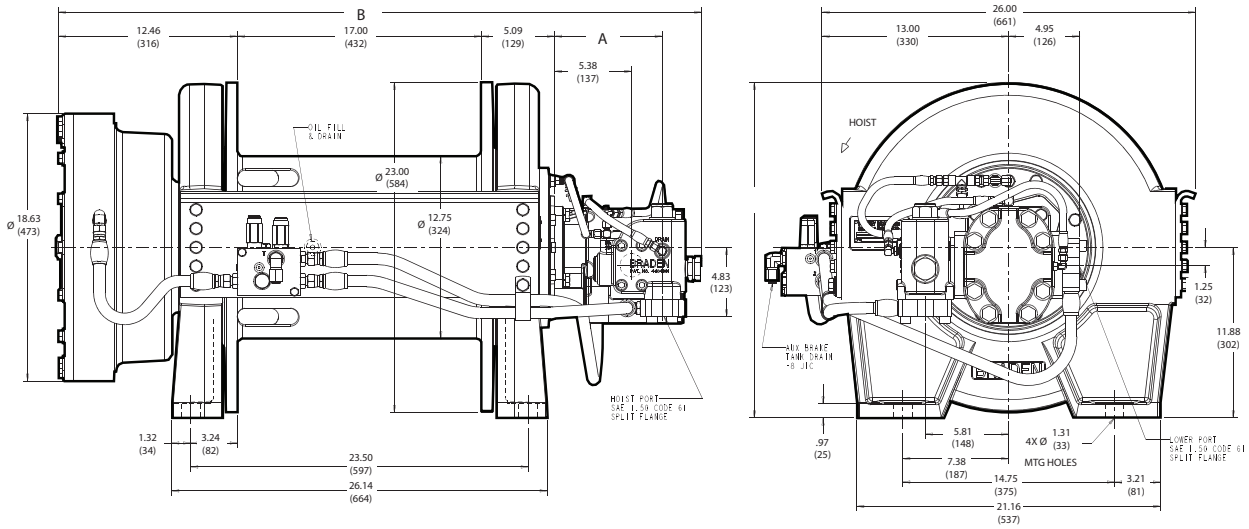
Pacific Marine & Industrial - [www.pacificmarine.net](http://www.pacificmarine.net)

### Performance

**-01 Drum  
Single-speed  
Motor**

RATIO		25:1			25:1			
MOTOR	090 (9.02 cu in.)	110 (11.0 cu in.)	120 (12.0 cu in.)	090 (147.8 cc)	110 (180.7 cc)	120 (197.1 cc)		
PRESSURE	2,500 psi	2,500 psi	2,500 psi	171 bar				
FLOW			170 gpm			643.5 lpm		
WIRE ROPE DIA		3/4 in.			19 mm			
LAYER	LINE PULL (lb)	LINE SPEED (fpm)	LINE PULL (lb)	LINE SPEED (fpm)	LINE PULL (lb)	LINE SPEED (fpm)	LINE PULL (kg)	LINE SPEED (fpm)
1	11970	416	15040	429	16500	434	5430	127
2	10770	462	13530	477	14820	482	4885	141
3	9790	508	12300	524	13500	530	4440	155
4	8980	555	11280	572	12370	579	4070	169
5	8290	601	10410	620	11420	627	3760	183
6	7690	647	9670	667	10610	675	3490	197

### Dimensions



**-01 DRUM**

DIMENSION VARIABLES, in.

MOTOR, cu-in.	A	B	C	D	E
9.02	7.50	44.81	17.00	23.50	26.14
11.0	7.75	45.06	17.00	23.50	26.14
12.0	7.88	45.18	17.00	23.50	26.14

**-01 DRUM**

DIMENSION VARIABLES, mm

MOTOR, cc	A	B	C	D	E
147.8	191	1,138	432	597	664
180.7	196.8	1,144	432	597	664
197.1	200.15	1,147.6	432	597	664

**-02 DRUM**

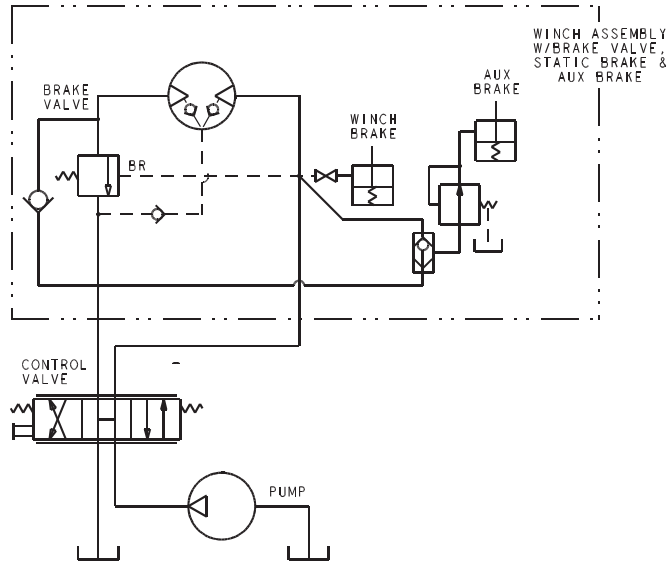
11.0	7.75	60.06	32.00	38.50	41.14
------	------	-------	-------	-------	-------

**-02 DRUM**

180.7	196.8	1,525.4	812.8	977.9	1,044.9
-------	-------	---------	-------	-------	---------

**Typical Hydraulic Control Circuits**

*CH165A-AB Single-speed*



Authorized Distributor:  
**Pacific Marine & Industrial**  
www.pacificmarine.net  
info@pacificmarine.net