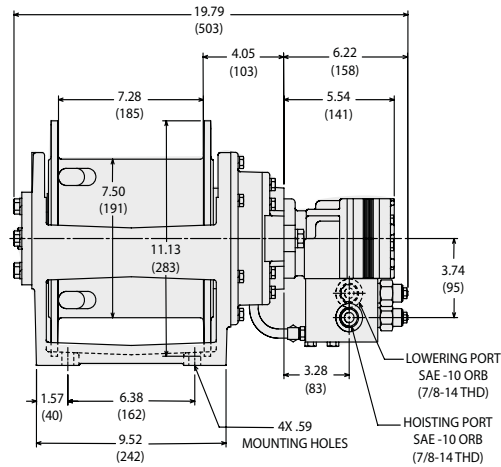
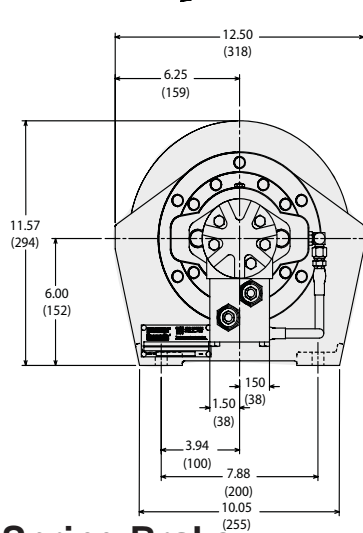




Authorized Distributor:
Pacific Marine & Industrial
www.pacificmarine.net
info@pacificmarine.net

BRADEN

MODEL BG6B UP TO 7,000-POUND LINEPULL CAST BASE



- Multi-disc Spring Brake
- Brake Valve /Smooth Performance
- High Efficiency Motor
- 7,000 lbs. First Layer
- Hydraulically Released Brake
- Anti-friction Bearings

Specifications

BG6B-67013-01

1.28 cu in. Motor (21cc)
2400 PSI (165 bar) @ 17 gpm (64 lpm)
Wire Rope Diameter: 7/16"

	LINE PULL		LINE SPEED		ROPE CAPACITY	
	LB	KG	FPM	MPM	FT	M
1	5,000	2,273	89	27	34	10
2	4,500	2,045	99	30	72	22
3	4,100	1,864	109	33	114	35
4*	3,760	1,709	119	36	160	49

* Layer does not meet ANSI B30.7

BG6B-07119-01

11.9 cu in. Motor (195cc)
2664 PSI (171 bar) @ 20 gpm (76 lpm)
Wire Rope Diameter: 7/16"

	LINE PULL		LINE SPEED		ROPE CAPACITY	
	LB	KG	FPM	MPM	FT	M
1	6,000	2,727	100	30	34	10
2	5,400	2,455	111	34	72	22
3	4,920	2,236	122	37	114	35
4*	4,510	2,050	133	41	160	49

* Layer does not meet ANSI B30.7

BG6B-29039-01

3.92 cu in. Motor (64cc)
1972 PSI (136 bar) @ 27 gpm (102 lpm)
Wire Rope Diameter: 7/16"

	LINE PULL		LINE SPEED		ROPE CAPACITY	
	LB	KG	FPM	MPM	FT	M
1	6,000	2,727	92	28	34	10
2	5,400	2,455	103	31	72	22
3	4,920	2,236	113	34	114	35
4*	4,510	2,050	123	37	160	49

* Layer does not meet ANSI B30.7

BG6B-07149-01H

14.9 cu in. Motor (244cc)
2430 PSI (167 bar) @ 20 gpm (76 lpm)
Wire Rope Diameter: 7/16"

	LINE PULL		LINE SPEED		ROPE CAPACITY	
	LB	KG	FPM	MPM	FT	M
1	7,000	3,182	79	24	34	10
2	6,310	2,868	88	27	72	22
3	5,740	2,609	97	30	114	35
4*	5,260	2,391	106	32	160	49

* Layer does not meet ANSI B30.7

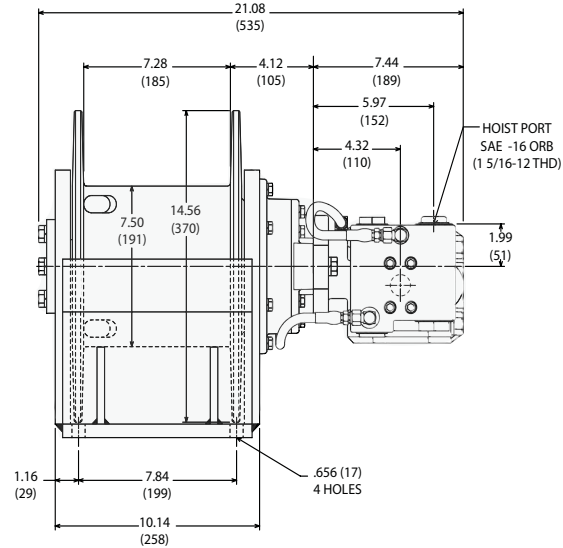
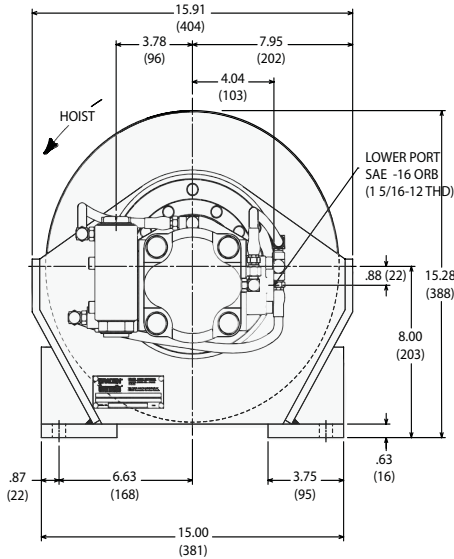
LIT2308 R2 9-2009



MODEL BG6B

Up To 7,000-POUND LINEPULL

FABRICATED BASE



- Multi-disc Spring Brake
- Brake Valve /Smooth Performance
- High Efficiency Motor

- 7,000 lbs. First Layer
- Hydraulically Released Brake
- Anti-friction Bearings

Specifications

BG6B-29029-02

2.94 cu in. Motor (48cc)
2701 PSI (186 bar) @ 21 gpm (79 lpm)
Wire Rope Diameter: 7/16"

	LINE PULL		LINE SPEED		ROPE CAPACITY	
	LB	KG	FPM	MPM	FT	M
1	6,000	2,727	92	28	34	10
2	5,400	2,455	103	31	72	22
3	4,920	2,236	113	34	114	35
4	4,510	2,050	123	37	160	49
5	4,160	1,891	133	41	209	64
6	3,870	1,759	144	44	262	80
7*	3,610	1,641	154	47	319	97
8*	3,390	1,541	164	50	380	116

* Layer does not meet ANSI B30.7

BG6B-67013-02

1.28 cu in. Motor (21cc)
2400 PSI (165 bar) @ 17 gpm (64 lpm)
Wire Rope Diameter: 7/16"

	LINE PULL		LINE SPEED		ROPE CAPACITY	
	LB	KG	FPM	MPM	FT	M
1	5,000	2,273	89	27	34	10
2	4,500	2,045	99	30	72	22
3	4,100	1,864	109	33	114	35
4	3,760	1,709	119	36	160	49
5	3,470	1,577	128	39	209	64
6	3,220	1,464	138	42	262	80
7*	3,010	1,368	148	45	319	97
8*	2,820	1,282	158	48	380	116

* Layer does not meet ANSI B30.7