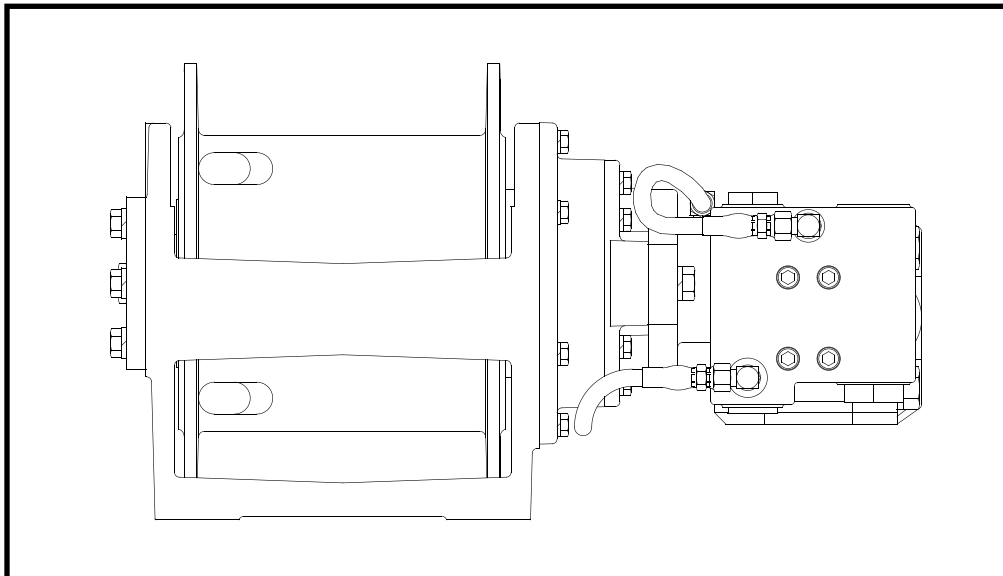


BRADEN®

BG6B

MATERIAL LIST



Authorized Distributor:
Pacific Marine & Industrial
www.pacificmarine.net
info@pacificmarine.net

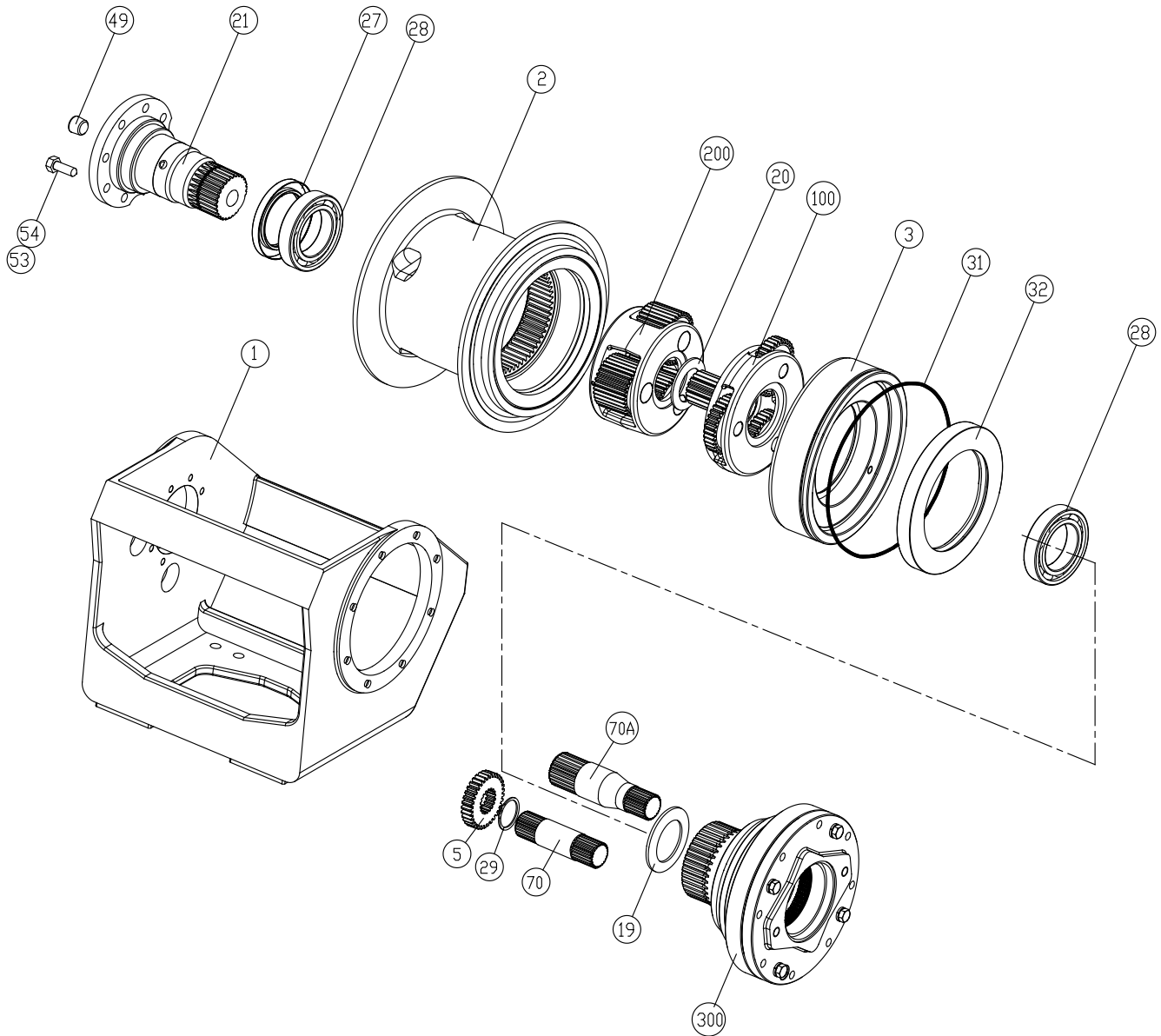
PACCAR WINCH DIVISION
P.O. BOX 547 BROKEN ARROW, OK U.S.A. 74013
PHONE (918) 251-8511 FAX (918) 259-1575
www.paccarwinch.com

LIT2255 R8
1/2012
PRINTED IN U.S.A.

© PACCAR Inc
All rights reserved.

Pacific Marine & Industrial - www.pacificmarine.net

BG6B COMPONENTS



SEAL KIT P.N. 61774

ITEM	PART NO.	DESCRIPTION	QTY
24	25727	O-Ring (013 Motor Group)	1
27	25582	Oil Seal (Bearing Support)	1
31	10450	O-Ring (Drum Closure)	1
32	25918	Oil Seal (Brake Cylinder)	1
36	25594	U-Cup Seal (Brake Cylinder)	1
46	70138	O-Ring (Brake Cylinder)	1
49	70117	Plug (Bearing Support)	1
--	25366	O-Ring (Motor Groups)	2
--	21063	O-Ring (Motor Groups)	1

NOTE: Items shown are those listed in this Material List. Seal Kits typically service multiple options and may contain additional items not required for your winch.

64581 - BEARING KIT

DESCRIPTION	PART NO.	QTY.
BALL BEARING	25917	2
THRUST RACE	13680	1
THRUST RACE	25590	1
THRUST WASHER	24914	6
BEARING ROLLER	24915	3
ROLLPIN	12025	3
PLANET GEAR SHAFT	25543	3
THRUST BEARING	24167	6
ROLLER BEARING	24175	6
BEARING SPACER	25548	3
ROLLPIN	21049	3
OUTPUT PLANET GEAR SHAFT	25545	3

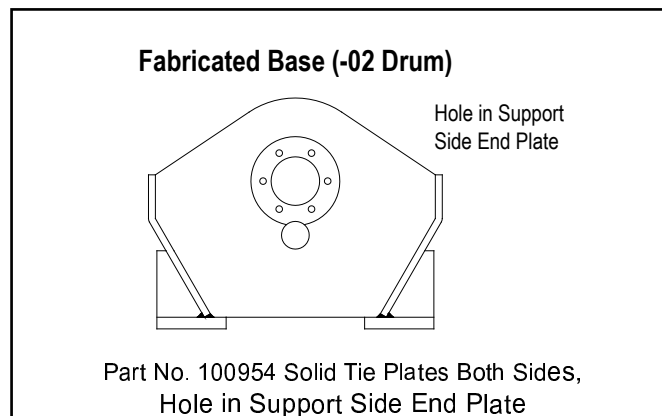
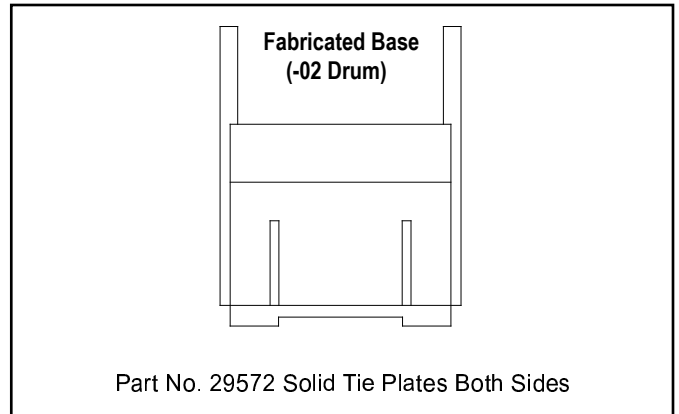
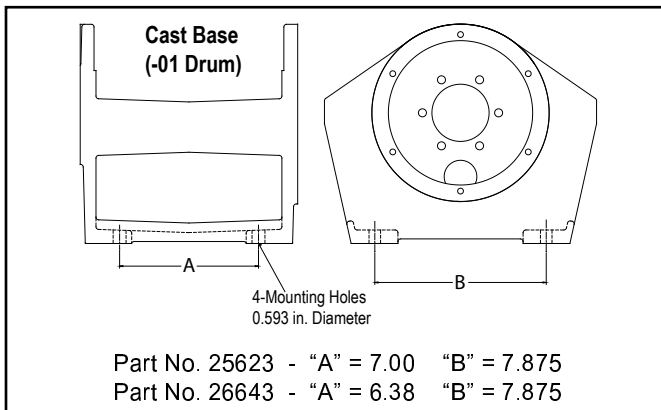


Authorized Distributor:
Pacific Marine & Industrial
www.pacificmarine.net
info@pacificmarine.net

BG6B MATERIAL LIST

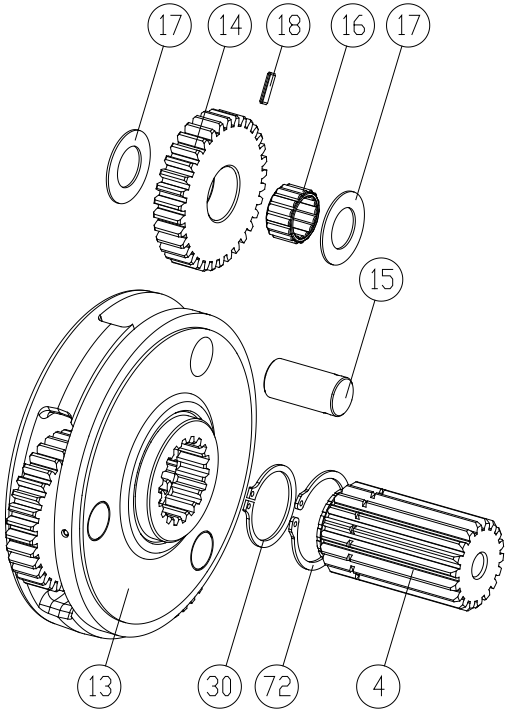
ITEM NO.	DESCRIPTION	PART NO.	QTY.
100	Primary Planet Carrier Assembly		1
200	Output Planet Carrier Assembly		1
300	Brake Cylinder Assembly		1
1	Base (see below)	-----	1
2	Cable Drum (02)	29031	1
	Cable Drum (01)	25624	1
	Cable Drum (02-1)	100955	1
	Cable Drum (01-1)	26644	1
3	Cable Drum Closure	25626	1
5	Primary Sun Gear (29:1 ratio only)	25547	1
	Primary Sun Gear (67:1 ratio only)	26288	1
19	Thrust Race	25590	1
20	Thrust Race	13680	1
21	Bearing Support	29517	1
27	Oil Seal	25582	1
28	Ball Bearing	25917	2
29	Snap Ring (29:1 ratio only)	25589	1
31	O-Ring	10450	1
32	Oil Seal	25918	1
49	Plug	70117	1
	Sight Gauge (-1 Personnel Handling)	26705	1
52	Hex Head Plug (not shown)	25663	2
53	Lockwasher	11025	6
54	Capscrew, 7/16 - 14 x 1 1/4 GD8	69386	6
55	Cable Wedge Std. (5/16" - 1/2" Wire Rope) (not shown)	26095	1
	Cable Wedge Optional (1/4" Wire Rope) (not shown)	28779	1
70	Input Shaft (29:1 ratio)	26524	1
70A	Input Shaft (29:1 ratio)	26092	1

WINCH BASES



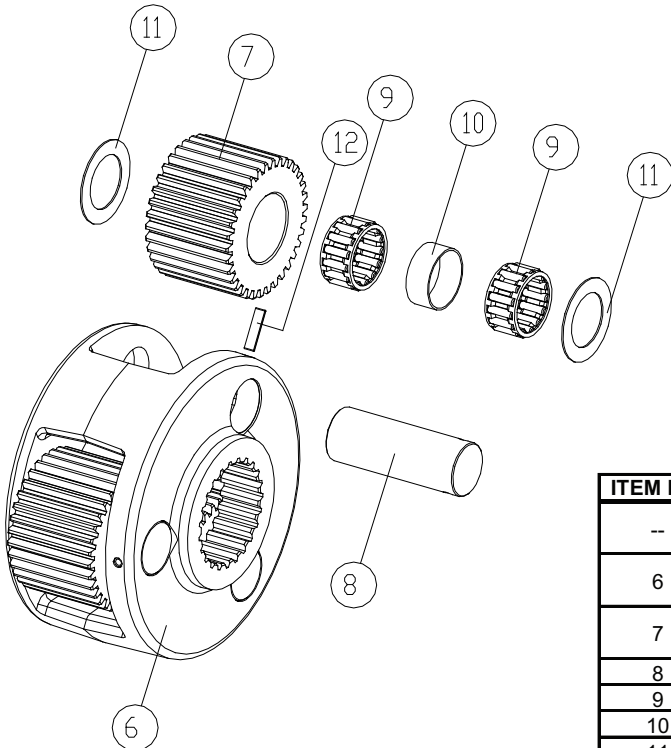
Authorized Distributor:
Pacific Marine & Industrial
www.pacificmarine.net
info@pacificmarine.net

PRIMARY PLANET CARRIER ASSEMBLY



ITEM NO.	DESCRIPTION	PART NO.	QTY.
--	Primary Planet Assembly (29:1 ratio)	81915	1
--	Primary Planet Assembly (67:1 ratio)	81790	1
4	Output Sun Gear (29:1 ratio)	25544	1
	Output Sun Gear (67:1 ratio)	25634	1
13	Primary Planet Carrier (29:1 ratio)	25531	1
	Primary Planet Carrier (67:1 ratio)	25629	1
14	Primary Planet Gear (29:1 ratio)	25556	3
	Primary Planet Gear (67:1 ratio)	25631	3
15	Planet Gear Shaft	25543	3
16	Bearing Roller	24915	3
17	Thrust Washer	24914	6
18	Rollpin	12025	3
30	Snap Ring (29:1 ratio)	13023	1
	Snap Ring (67:1 ratio)	11953	1
72	Snap Ring (29:1 ratio)	25588	1
	Snap Ring (67:1 ratio)	11953	1

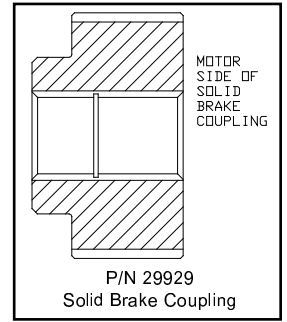
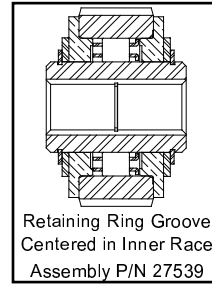
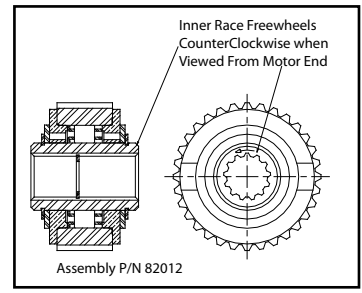
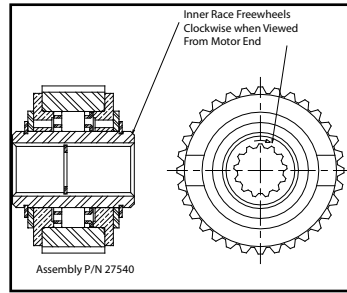
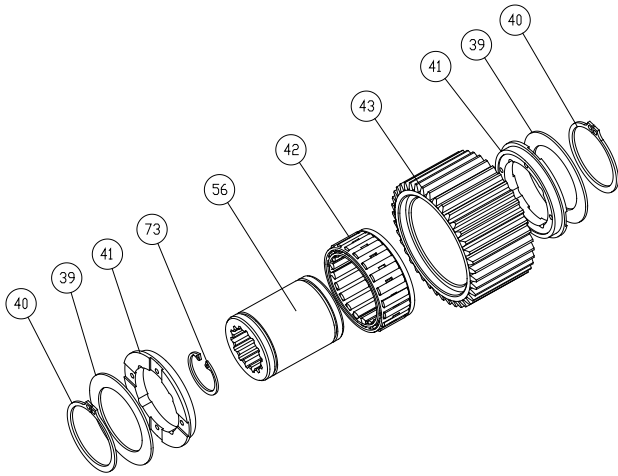
OUTPUT PLANET CARRIER ASSEMBLY



ITEM NO.	DESCRIPTION	PART NO.	QTY.
--	Output Planet Assembly (29:1 ratio)	81917	1
--	Output Planet Assembly (67:1 ratio)	81791	1
6	Output Planet Carrier (29:1 ratio)	25532	1
	Output Planet Carrier (67:1 ratio)	25630	1
7	Output Planet Gear (29:1 ratio)	25546	3
	Output Planet Gear (67:1 ratio)	25632	3
8	Output Planet Gear Shaft	25545	3
9	Roller Bearing	24175	6
10	Bearing Spacer	25548	3
11	Thrust Bearing	24167	6
12	Roll Pin	21049	3



BRAKE CLUTCH ASSEMBLIES



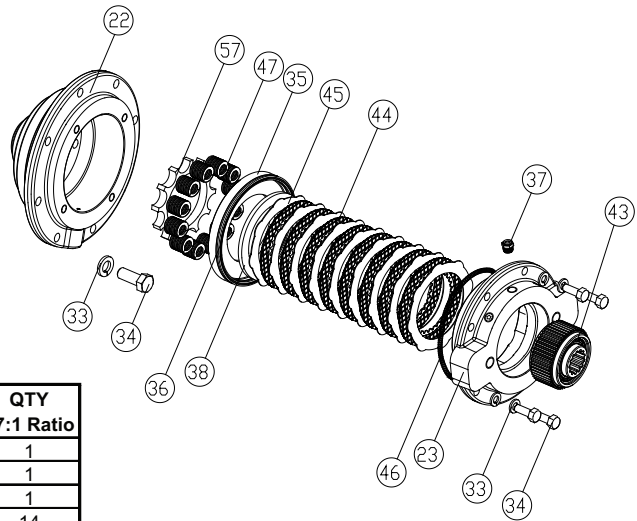
ITEM NO.	DESCRIPTION	PART NO.	QTY.
39	Thrust Bearing	24421	2
40	Retaining Ring	24934	2
41	Spacer Bushing	25849	2
42	Sprag Clutch	NSS	1
43	Outer Brake Race	NSS	1
56	Inner Brake Race	NSS	1
	Inner Brake Race	NSS	1
73	Retaining Ring - used in Assy 27539	104055	1
	Retaining Ring - ALL OTHERS	32115	1

NSS - Not Serviced Separately. Replace complete assembly.

Complete Assemblies

PART NO.	DESCRIPTION
27539	013 motor
82012	UNDERWIND (-020, -029, -039 motors)
27540	STANDARD Rotation (-020, -029, -039 motors)
29929	Solid Brake Coupling

BRAKE CYLINDER ASSEMBLY



ITEM NO.	DESCRIPTION	PART NO.	QTY	
			29:1 Ratio	67:1 Ratio
22	Brake Cylinder	103330	1	1
23	Motor Adapter*	102938	1	1
	Motor Adapter**	102937	1	1
33	Lockwasher	11024	14	14
34	Capscrew	11767	14	14
35	Spring Plate	25552	1	1
36	U-Cup Seal	25594	1	1
37	Relief Valve (67:1 ratio w/013 motor)	18062	1	1
	Relief Valve - ALL OTHERS	10074	1	1
38	Brake Plate Spacer	25550	1	2
43	Brake Clutch Assembly	----	1	1
44	Friction Disc***	25541	7	5
45	Brake Disc***	102314	8	6
46	O-Ring	70138	1	1
47	Spring (67:1 ratio & 013 motor)	24916	6	6
	Spring - ALL OTHERS	26094	6	6
57	Spring Locator	100136	1	1

* 2 Bolt "A", 4.19 in. between motor bolt holes

** 2 Bolt "B", 5.75 in. between motor bolt holes

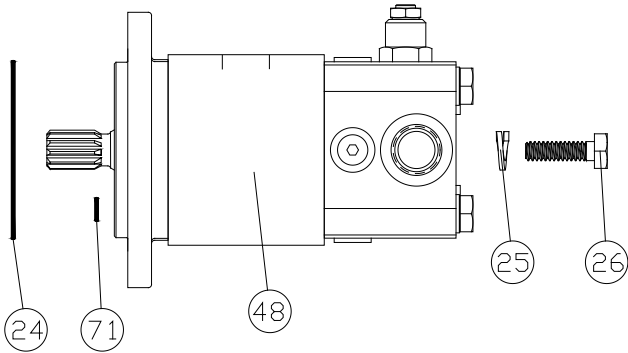
*** Quantity shown in assembly drawing is for representational purposes only

64097 - BRAKE + SEAL REPAIR KIT

DESCRIPTION	PART NO.	QTY.
OIL SEAL	25582	1
OIL SEAL	25918	1
SPRING	26094	12
U-CUP SEAL	25594	1
FRICITION DISC	25541	8
BRAKE DISC	102314	9
O-RING	70138	1
GASKET - MOTOR 2B A MOUNT	23108	1
O-RING	12463	2
O-RING, BRAKE VALVE	106744	2

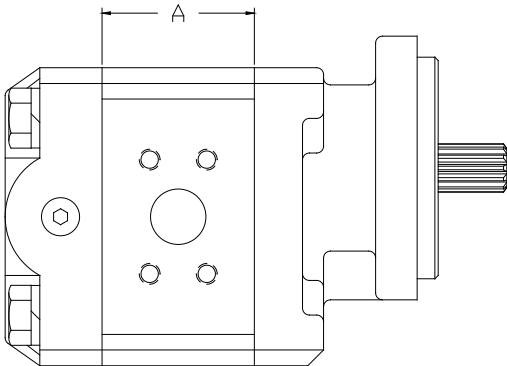
MOTOR GROUP PARTS

HYDRAULIC MOTOR GROUP (013)



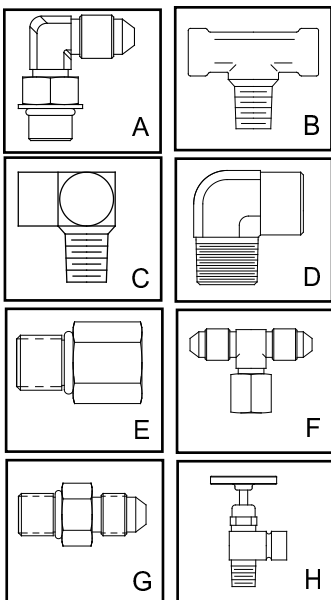
ITEM NO.	DESCRIPTION	PART NO.	QTY.
24	O'Ring	25727	1
25	Lockwasher	27152	2
26	Capscrew	104309	2
48	Motor (013)	105392	1
71	O'Ring	24520	1

GEAR MOTORS



PART NO.	MOTOR CODE	"A" DIM.
25385	029	2.25 in.
25386	020	1.75 in.
25515	039	2.75 in.

FITTINGS



Part No.	Description	Ref. Dwg.
25302	Elbow, -4 JIC to -4 ORB	A
25131	Elbow, -4 JIC to -6 ORB	A
22934	Tee, 1/8-27 NPT-F Run to 1/8-27 NPT-M Branch	B
24236	Street Elbow, Reducer, 1/4-18M to 1/8-27F	C
13708	Street Elbow, 1/8-27	D
24784	Adapter, 7/16 ORB to 1/8-27 NPT-F	E
25748	Swivel Tee, -4 JIC M Run X -4 JIC F Swivel Branch	F
25864	Adapter, -4 JIC to -4 ORB	G
25258	Needle Valve	H
70182	Cap, -4 JIC	----

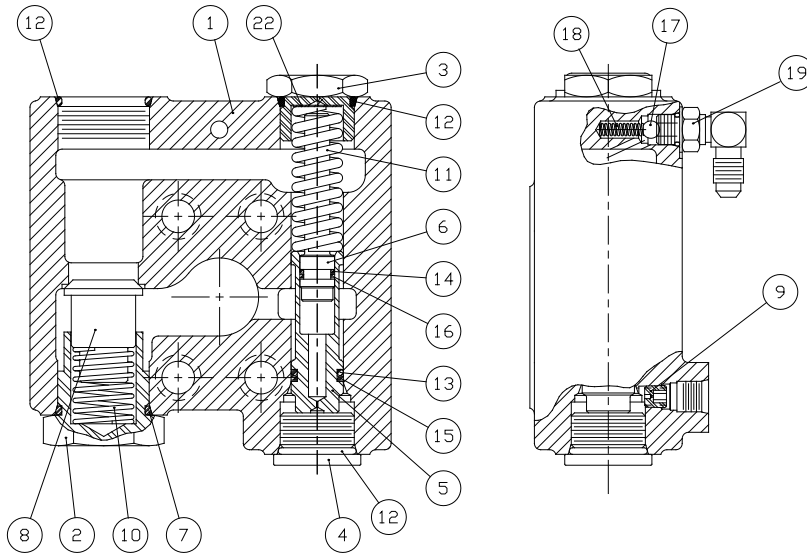
Warning Tag (-1 winches only) - Part No. 25257



Authorized Distributor:
Pacific Marine & Industrial
www.pacificmarine.net
info@pacificmarine.net

BRAKE VALVE

Part No. 81715 - All except 013 Motor)



ITEM	DESCRIPTION	QTY.	PART NO.
1	Valve Housing	1	NSS*
2	Check Valve Retainer	1	24424
3	Spring Retainer	1	24183
4	Plug	1	22450
5	Spool	1	NSS*
6	Damper Piston	1	NSS*
7	O-Ring	2	24186
8	Check Valve Poppet	1	24423
9	Pilot Orifice	1	24200
10	Check Valve Spring	1	24190
11	Spool Spring	1	24192
12	O-Ring	1	23601
13	O-Ring	1	24193
14	O-Ring	1	24194
15	Back-up Ring	1	24195
16	Back-up Ring	1	24196
17	Check Ball (1/4 in.)	1	21158
18	Check Ball Spring	1	25480
19	Elbow Fitting	1	25302
22	Shim	A.R.	25661

* NSS - Not Services Separately. If any of these parts needs replacement, the entire brake valve must be replaced.

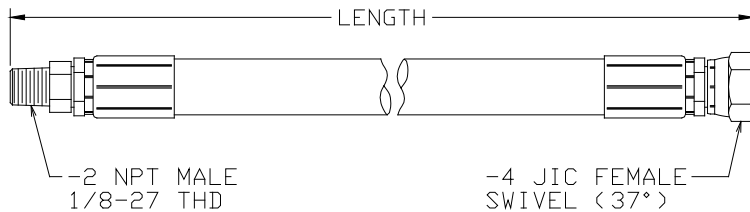
CAPSCREWS AND LOCKWASHERS

PART NO.	DESCRIPTION
13544	3/8 NC x 1-1/2 G8, Socket Head EARLY
13827	3/8 NC x 1-1/4 G8, Socket Head CURRENT
25622	3/8 NC x 2-3/4 G8, Socket Head
104174	1/2 NC x 1-1/4 G8, Zinc Plated Hex Head
104322	1/2 NC x 1-1/2 G8, Zinc Plated Hex Head
11026	1/2 Split, Zinc Plated

BRAKE VALVE SEAL KIT P/N 61567

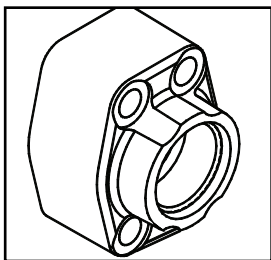
ITEM	PART NO.	DESCRIPTION	QTY
7	24186	O-Ring	1
12	23601	O-Ring	2
13	24193	O-Ring	1
14	24194	O-Ring	1
15	24195	Back-up Ring	1
16	24196	Back-up Ring	1

HOSE ASSEMBLIES

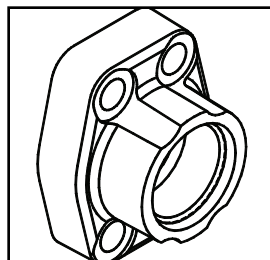


PART NO.	LENGTH
13704	12 in.
13706	16 in.
13707	17 in.
13710	8 in.
13711	10 in.

SPLIT FLANGE ADAPTER



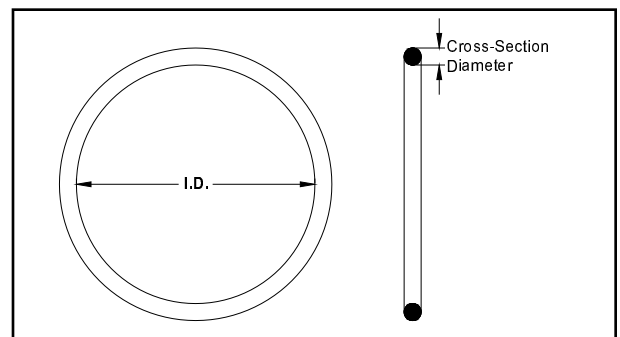
EARLY - Use socket head capscrews 13544.



CURRENT - Use socket head capscrews 13827.

PART NO.	DESCRIPTION
25539	Split Flange Adapter

O-RINGS



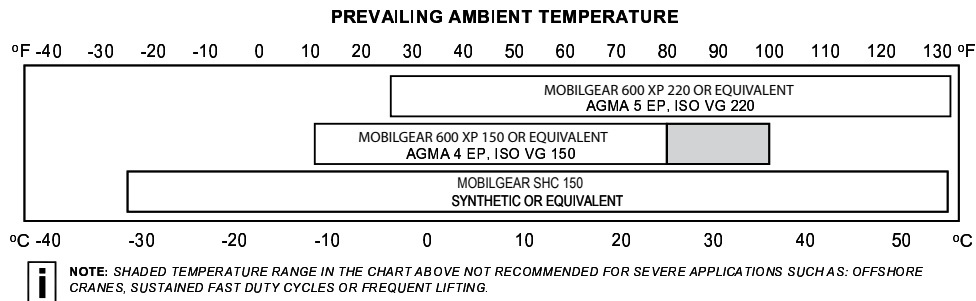
PART NO.	I.D.	CROSS-SECTION DIA.
25366	1.296	0.139
21063	3.984	0.139

RECOMMENDED PLANETARY GEAR OIL

Field experience, supported by engineering endurance tests, indicates the use of the proper gear oil and a program of regular preventive maintenance will help provide extended gear train life and reliable winch brake performance. For this reason, BRADEN has published the following specifications to assist in determining which lubricant is best suited to your application.

For simplicity, BRADEN has listed available products in each temperature range that have been tested and found to meet our specifications. This is not to say that other lubricant brands would not perform equally as well.

If the following lubricant brands are not available in your area, make certain your lubricant vendor supplies you with oil that is equivalent to those products listed below.



Planetary hoists are factory filled with Mobilgear 600 XP 150, or equivalent. Consult your oil supplier for other equivalent oils if required.

Mobil	Shell	Chevron	Texaco
Mobilgear 600 XP 150	Omala 150	Gear Compounds EP 150	Meropa 150
Mobilgear 600 XP 220	Omala 220	Gear Compounds EP 220	Meropa 220

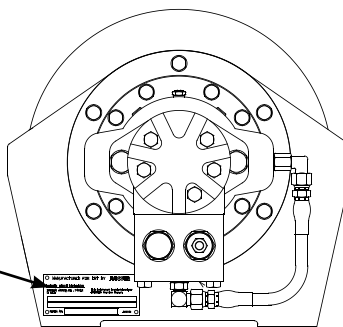
Unless otherwise specified, it is recommended that the gear oil be changed after the first one hundred (100) hours or thirty (30) days of machine operation, then every one thousand (1,000) hours or twelve (12) months, whichever occurs first. The gear oil should also be changed whenever the ambient temperature changes significantly and an oil from a different temperature range would be more appropriate.

A warm-up procedure is recommended at each start-up and is essential at ambient temperatures below +40°F (4°C).

The prime mover should be run at its lowest recommended RPM with the hydraulic winch control valve in neutral allowing sufficient time to warm up the system. The winch should then be operated at low speeds, forward and reverse, several times to prime all lines with warm hydraulic oil and to circulate gear lubricant through the planetary gear sets.

If you have any questions regarding your BRADEN planetary winch, please contact the BRADEN Product Support Department at 1-918-251-8511, Monday through Friday from 08:00 to 16:30 hours CT, or by fax at 1-918-259-1575.

Model Number
Serial Number



The BRADEN BG6B winch has the model and serial numbers stamped into the brake cylinder endplate. **Always** reference both of these numbers when ordering replacement parts. Our goal is to ship the correct parts, the first time.

FOR BEST RESULTS, ALWAYS USE GENUINE BRADEN REPLACEMENT PARTS

TO ORDER PARTS:

1. List model and serial numbers of the winch.
2. Refer to drawings and select the component(s) needed and list the item number(s).
3. Find item number(s) on material list; show part number, description and quantity required on your order.
4. Refer to parts price list and show price for each part or assembly.

